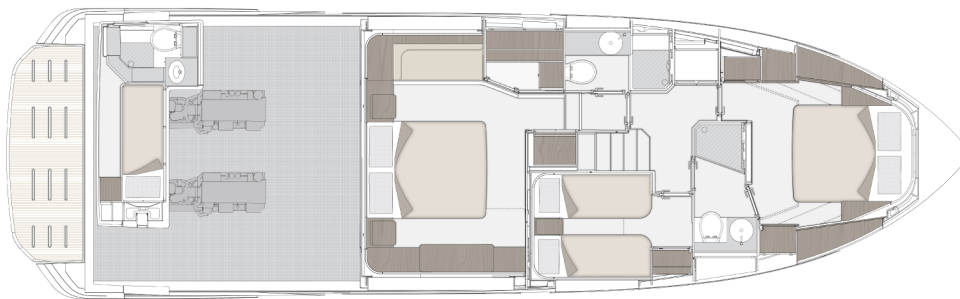
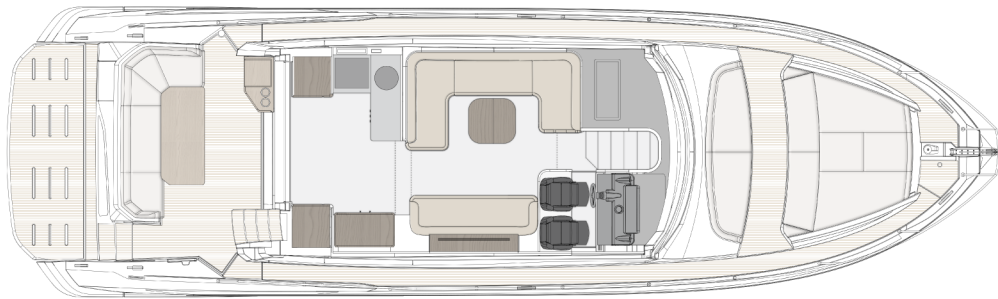
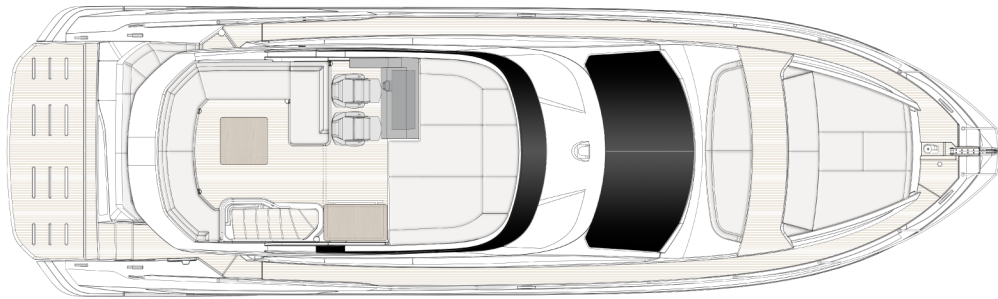


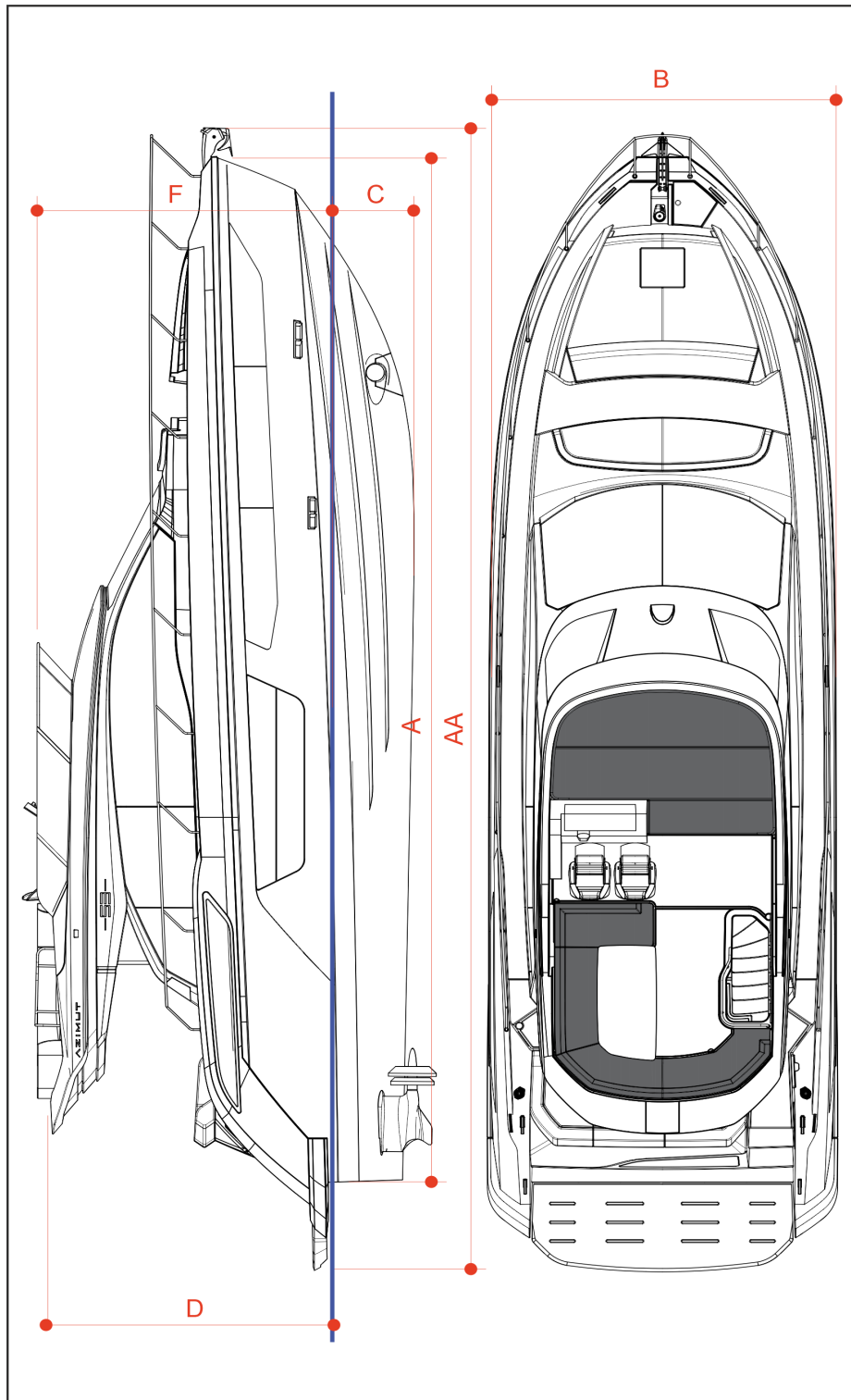
FLY 53 (FROM HULL 212)

General plans (the imagine is to be considered as indicative only)



TECHNICAL SPECIFICATIONS FLY 53 (FROM HULL 212)

Dimensional diagram (figure shown for indicative purposes) WIP



TECHNICAL SPECIFICATIONS FLY 53 (FROM HULL 212)

Main characteristics

The following tables list the boat's main characteristics.

Dimensions and weights

(AA) Maximum length L_{MAX} ISO 8666 (stern platform, pulpit overhang and rub-rails included)	16.78 m (55' 1")
(A) Hull length L_H ISO 8666 (net GRP, excluding stern platform)	15.87 m (52' 1")
Waterline length L_{WL} ISO 8666 (with full load)	13.62 m (44' 8")
Hull beam B_H ISO 8666 (main section)	4.84 m (15' 11")
Hull beam with BHOA rub-rails (amidship, BH + rub-rails)	4.90 m (16' 1")
(B) Maximum beam B_{MAX} ISO 8666 (to rub-rails)	4.95 m (16' 3")
(C) Draught T_{keel} ISO 8666 (at keel)	1.11 m (3' 8")
Draught T_{MAX} ISO 8666 (at the propellers)	1.41 m (4' 8")
(D) Hull height H_A ISO 8666 (from waterline to radar arch, STANDARD version)	4.02 m (13' 2")
(D) Hull height H_A ISO 8666 (from waterline to radar arch, HARD TOP version)	5.78 m (18' 12")
(F) Height H_{screen} (from waterline to flybridge screen)	4.31 m (14' 2")
(E) Height H_{mast} (from radar arch to light mast)(to be added to the value of "D")	1.46 m (4' 9")

Maximum load recommended by the manufacturer ((Max. no. people on board x 75 kg) + (Max. no. people on board x 30 kg baggage))	1,260 kg (2,777.8 lb)
Loaded displacement m_{LDC} ISO 8666 (boat mass with full tanks + max. no. of crew members and personal equipment + life raft, with tender)	30.0 t (29.53 tn l.)
Light displacement m_{LCC} ISO 8666 (boat mass with empty tanks without crew and equipment)	23.4 t (23.03 tn l.)

Tank capacity

Diesel tank capacity (total)	2,400 l (634 US. liq.gal.)
Fresh water tank capacity	590 l (155.9 US. liq.gal.)
Black water tank capacity	175 l (46.2 US. liq.gal.)
Gray water tank capacity	175 l (46.2 US. liq.gal.)
Total capacity of tanks	3,340 l (882.3 US. liq.gal.)

Layout and structure

Cabins	3 + 1 crew cabin (if present)
Beds	6 + 1 crew cabin (if present)
Heads	2 + 1 crew cabin (if present)

TECHNICAL SPECIFICATIONS FLY 53 (FROM HULL 212)

Material	GRP+ CAR-BON
Hull	Planing, aft deadrise: 13.6° - hull center deadrise: 16.8°
Hull designer	Azimut R&D in collaboration with MICAD
Exterior designer	Alberto Mancini
Interior designer	Style Dept. Azimut MC

Approval category and capacity

Type approval category CE	B
Maximum capacity	12 people

Performance (WIP)

Maximum speed (*)	31 kn
Cruising speed (*)	26 kn
Maximum speed consumption (*)	285 l/h (75.29 US.liq.gal./h)
Cruising speed consumption (*)	211 l/h (55.74 US.liq.gal./h)
Range at cruising speed (*) (including 10% for fuel that cannot be pumped)	266 nmi

► N.B.

(*) All performance specified in the table above applies to a standard configuration boat (standard equipment installed excluding tender, jet ski, etc.) with clean hull, propellers, and rudders.

Furthermore, the performance indicated above has been defined under good sea and wind conditions (Beaufort Scale level 1, Douglas Scale level 1, ambient T < 25 °C, seawater T = 15 °C, atmospheric P = 1013.25 hPa) with two people on board, 25% fuel, and fresh, gray, and black water tanks empty.

Different or harsher sea conditions may significantly affect performance.

GRP frame

MATERIAL

	CARBON FIBER	FIBER-GLASS
HULL		X
DECK		X
DECKHOUSE		X
FLYBRIDGE		X
HARD TOP	X	

TYPE OF RESIN

	VINYL ESTER	POLYESTER
HULL SKIN COAT	X	
HULL CORE CONSTRUCTION	X	
DECK SKIN COAT	X	
DECK CORE CONSTRUCTION	X	
DECKHOUSE SKIN COAT	X	

TECHNICAL SPECIFICATIONS FLY 53 (FROM HULL 212)

	VINYL ESTER	POLYESTER
DECKHOUSE LAMINATION		X
FLYBRIDGE SKIN COAT	X	
FLYBRIDGE CORE CONSTRUCTION		X
TRAYS		X

Propulsion system summary tables

Engines

Manufacturer	VOLVO Penta
Model	D11
Type	Diesel engine
Max. power	2x533 kW (725 hp)

Reduction gears / marine gears

Manufacturer	VOLVO PENTA
Model	IPS 950
Reduction ratio	1.70:1

Propellers

Manufacturer	VOLVO
Type	Series P4
Number of propellers	4 (2 counter-rotating for each IPS)

Tables of deck fittings characteristics

Anchor

Quantity	1
Weight	30 kg (66.1 lb)
Material	steel

Anchor chain

Quantity	1
Diameter	10 mm (0.39 in)
Length	75 m (246' 1")
Material	galvanized steel

Anchor winch

Quantity	1
Engine power	1700 W
Engine voltage	24 V

Mooring winch (OPT)

Quantity	2
Engine power	800 W
Engine voltage	24 V

Cleats

Quantity - bow	2
Quantity, midship	2
Quantity - stern, on mooring station	2
Material	stainless steel

Flybridge

- Access to flybridge via stairway, located on starboard side
- GRP external stairway with teak steps
- Non-slip floor
- Access door
- Plexiglass and painted steel flybridge screen
- Boat logo on side GRP
- Stainless steel handrails
- Dining area with C-shaped sofa with backrest and removable cushions for outdoors
- Table with central stainless steel fixed leg

TECHNICAL SPECIFICATIONS FLY 53 (FROM HULL 212)

- Fore sunbed area
- Flybridge bar cabinet (optional), with:
 - Sink built into cabinet with retractable water tap
 - fridge/icemaker
 - Barbecue with stainless steel protective cover for cabinet door and safety off switch
 - Waste bin
- Helm seat for one person
- Adjustable steering wheel
- Flybridge dashboard consisting of:
 - electronic navigation instruments, BRONZE version
 - Engine throttles
 - anchor winch control and chain meter counter built in the electronic instrumentation
 - audible alarm controls
 - Communication systems (VHF)
 - horn, bilge and mute activation keys
- Scuppers
- Light mast
- Navigation lights
- Manual searchlight

► **N.B.**
STD electronic navigation instruments: see relevant paragraph

Bow / walk arounds

Bow

- Chain locker accessible through hatch provided with drainage
- Fenders storage in fore peak
- Stainless steel anchor line anti-rubbing protection
- Bow hatch (emergency exit from VIP cabin)
- Four-seater sofa, facing the bow, with removable cushions

- Non-slip floor
- Scuppers

Walk arounds

- Refueling: two "Diesel" refueling plugs with cover
- Fresh water filling: one "Water" filling plug
- Black water outlet: one "Waste" outlet water plug
- Rub-rail in stainless steel and high resistance PVC
- Non-slip floor
- Pulpit with handrail

Cockpit / platform

Cockpit

- Access to cockpit, starboard side
- Mooring station on both sides
- 6-seater L-shaped cockpit bench (in GRP integrated in the deck)
- Cockpit bench cushions
- Saloon access door made in aluminum with tempered glass: three flat panels opening towards the port side
- Engine room access via door in cockpit floor
- Non-slip floor
- Flybridge access stairs handrail
- Lighting: spotlights in cockpit ceiling panel

Platform

- Hydraulic platform
- Swimming ladder
- Hot and cold water shower head
- Non-slip floor
- Crew cabin access through door on deck, aft
- INSTALLABLE TENDER (OPT):
 - RECOMMENDED TENDER: Pirelli J29
 - MAXIMUM INSTALLABLE PLATFORM LOAD: 380 kg* (837.75 lb*), (the above

TECHNICAL SPECIFICATIONS FLY 53 (FROM HULL 212)

value considers 180 kg (396.83 lb) of water toys + 200 kg (440.92 lb) for operators and various accessories)

► **N.B.**

* liftable load with tender positioned as recommended by the boatyard.

Wheelhouse

- Single helm seat
- Leather adjustable steering wheel with stainless steel spokes
- The dashboard consists of:
 - electronic navigation instruments, BRONZE version
 - anchor winch control and chain meter counter built in the electronic instrumentation
 - Engine throttles
 - Communication systems (VHF)
 - magnetic compass
 - USB socket
 - Adjustable air conditioning outlets
 - horn, windscreen wipers, windshield washers, engine battery parallel, bilge and mute activation keys

► **N.B.**

Electronic navigation instruments: see relevant paragraph

Saloon and Dinette / Galley

Saloon and Dinette

- Cupboards in oak
- Carpeted floor
- One sofa on starboard side, two seats
- One "C"-shaped sofa on port side, four seats
- Cabinet for crockery

- Provision for TV system with aerial
- GRP and lacquered wood ceiling
- Sliding curtains
- Saloon door blind
- Two loudspeakers
- Saloon table with stainless steel leg

Galley

- Located aft of the main deck on port side
- Laminated floor
- Ceramic glass range with two hobs
- Extractor hood
- Stainless steel sink
- Fridge/freezer (220 l - 7.76 cu.ft)
- Microwave oven + grill
- Waste bin

Corridor

- Below deck access corridor with carpeted floor
- Spotlights
- Bulwark coating in wood and leatherette
- Corridor grabrails

Owner's cabin

The full-beam owner's cabin is composed of:

- Double bed at the center of the yacht, with foldaway bed base and locker
- Wooden headboard
- Two fixed bedside tables with openable top
- Cabinet with panels and shelves on starboard side
- Walk-in wardrobe with hanger bar on port side
- Sofa on port side
- Spotlights
- Two openable portlights
- Hull windows
- Venetian blinds

TECHNICAL SPECIFICATIONS FLY 53 (FROM HULL 212)

- Mirror on cabin's fore bulkhead, starboard
- Bulwark coating in leatherette
- Fabric wall upholstery
- Leatherette and GRP ceilings
- Provision for TV system
- Sockets
- Air conditioning system control panel (if A/C installed)

Owner's head

Located forward of the owner's cabin, on port side. It is composed of:

- independent access from owner's cabin
- Lacquered top and round Vetro Freddo washbasin
- TECMA toilet
- Mixer tap
- Separate shower enclosure; flat shower door
- Chromed shower rail
- Wall unit with two-panel mirror above the washbasin top and underbasin cabinet with shelves
- Spotlights
- One openable portlight
- Venetian blinds
- Non-slip GRP flooring in shower
- Sockets
- Head accessories

VIP cabin

Located at the bow, it is accessed via the central corridor. It is composed of:

- Double bed at the center of the boat with locker on the plane
- Wooden headboard
- Two openable wall units with storage areas (each side) over the windows

- Two wardrobes with hanger bars and mirror
- Leatherette and gelcoat ceiling
- Spotlights lighting
- Emergency exit in ceiling through concealed rectangular hatchway leading to fore sunbed area
- Direct access to VIP / guest head
- Two openable portlights inserted in windows
- Venetian blinds
- Fabric-upholstered bulwarks
- Carpeted floor
- Air conditioning system control panel (if A/C installed)
- Sockets

Guest cabin

Located on starboard side.

- Two single beds with lockers
- One wardrobe with hanger bar and shelves
- One central bedside table between the beds
- One wall unit on starboard side
- Painted ceilings
- Spotlights
- Leatherette headboard
- One openable portlight
- Carpeted floor
- Bulkhead coating in fabric, wood and lacquered
- Venetian blind

VIP / Guest head

- Positioned abaft of the VIP cabin, on starboard side
- Direct access from the VIP cabin or from the corridor
- Lacquered top and round Vetro Freddo washbasin

TECHNICAL SPECIFICATIONS FLY 53 (FROM HULL 212)

- Mixer tap
- TECMA toilet
- Separate shower enclosure; flat shower door
- Chromed shower rail
- Spotlights lighting
- Underbasin cabinet with shelves
- Wall unit with mirror
- One openable portlight
- Venetian blind
- Non-slip GRP flooring in shower
- Head accessories
- Sockets
- DC electric panel: three installed, one of which on the fore bulkhead of the engine room
- AC electric panel: two installed, one of which on the fore bulkhead of the engine room
- Auxiliary electric panel installed in the saloon entrance cabinet
- Emergency control panel on electric panel
- Battery cut-out control panel installed in the cockpit
- Onboard voltages:
 - 230 V - 50 Hz AC
 - 24 V DC from battery set
 - 12 V DC from battery set and AC/DC voltage reducer

Crew room (OPT)

Crew cabin

- Located at stern
- Access from platform
- Single bed
- One wardrobe on starboard side
- GRP ceiling panel
- Bulkhead shelves, at the foot of the bed
- Openable portlight
- GRP non-slip floor
- Spotlights

Crew head

- TECMA toilet
- Washbasin
- Chrome mixer with extractable shower head
- Shower area with waterproof curtain
- Wall unit with mirror
- Cupboard under the sink
- Socket
- Head accessories

Electric system

Main characteristics

- Shore-powered power supply

Generator

- One single phase generator 5 kW / 230 V AC - 50 Hz for EU system
- Remote start up

Shore power sockets

- EU one 3P - 50 A socket
- The AC power sources terminate on the main electric panel in the engine room, for the 230 V network. The power sources are protected by suitably sized power circuit breakers, and introduced into the network by means of remote control switches.

Batteries

- Six service batteries 95 Ah - 12 V DC
- Four engine batteries 95 Ah - 12 V DC
- One generator battery 70 Ah - 12 V
- One service/engine starter battery charger 60 Ah - 24 V
- One generator starter battery charger 12 Ah - 12 V

Lights and sockets

- 230 V AC sockets for main utility power supply, EU type

TECHNICAL SPECIFICATIONS FLY 53 (FROM HULL 212)

- USB sockets
- Internal lighting: 24 V LED type
- External lighting: 24 V LED type

Electronic navigation instruments

- For STD equipment, see "flybridge dashboard equipment" and "internal dashboard equipment" paragraphs
- For a detailed list of alternative/additional equipment available, please refer to the Optionals price list

► **N.B.**

The electronics are constantly being updated, therefore the indicated configuration may be subject to changes.

Bilge system

- Main system composed of three automatic and independent pumps located in each watertight compartment:
 - two in the engine room (fore and aft)
 - one (central) under owner's cabin floor
- Secondary or auxiliary system, composed of two manual pumps with three suction points located as follows:
 - two in the engine room (fore and aft)
 - one (central) under owner's cabin floor

Fire extinguishing system

- One gas fire extinguisher in the engine room
- One system manual activation control in the cockpit
- System indicator/reset on instrument board

Fuel system

- Two plastic fuel tanks located crossways on fore part of the engine room, total 2400 l (634 US.liq.gal.)
- Two electronic fuel level sensors monitored through indication on the wheelhouse
- One fuel level optical gage on port tank
- Two engine single RACOR settling filters
- Two tank vents on bulwark, one per side
- Remote engine diesel shut-off via 24 V solenoid valve
- Remote generator diesel shut-off via 12 V solenoid valve
- Two refueling plugs on walk arounds (one per side)
- Possibility of leveling diesel from one tank to the other, using a communicating pipe
- Possibility of refueling both diesel tanks from a single refueling plug, by means of the communicating pipe

Fresh water system

- One 590 l (155.86 US.liq.gal.) plastic tank under accommodation tray, under stairway floor and lobby
- Water filling through cap located in the fore part of the starboard walk around
- Water pressure pump unit located in the engine room, port aft side (24 V - 50/60 Hz) with electronic control
- 60 liter (15.85 US.liq.gal.) water heater under the corridor
- Fresh water toilet flushing
- One level sensor with electronic indicator monitored through indication on the wheelhouse
- System that can be isolated by ACORN manifolds under the corridor floor

TECHNICAL SPECIFICATIONS FLY 53 (FROM HULL 212)

Black water system

- 175 l (46.23 US.liq.gal.) polyethylene tank under VIP cabin
- One level sensor with electronic indicator monitored through indication on the wheelhouse
- Two tank vents on bulwark with anti-odor filter
- One macerator pump
- Suction point from port walk around
- TECMA toilet
- Sea outlet from tank

Gray water system

- 175 l (46.23 US.liq.gal.) polyethylene tank, under the cabin area corridor (central tank)
- One level sensor with electronic indicator monitored through indication on the wheelhouse
- Sea outlet from tank
- Two tank vents on bulwarks
- Diaphragm pump

Seawater system

- Engine cooling system: includes two seawater intakes with filter and 2" 1/2 ball valve
- Generator cooling system: includes one seawater intake with filter and 1" ball valve

Engine room ventilation

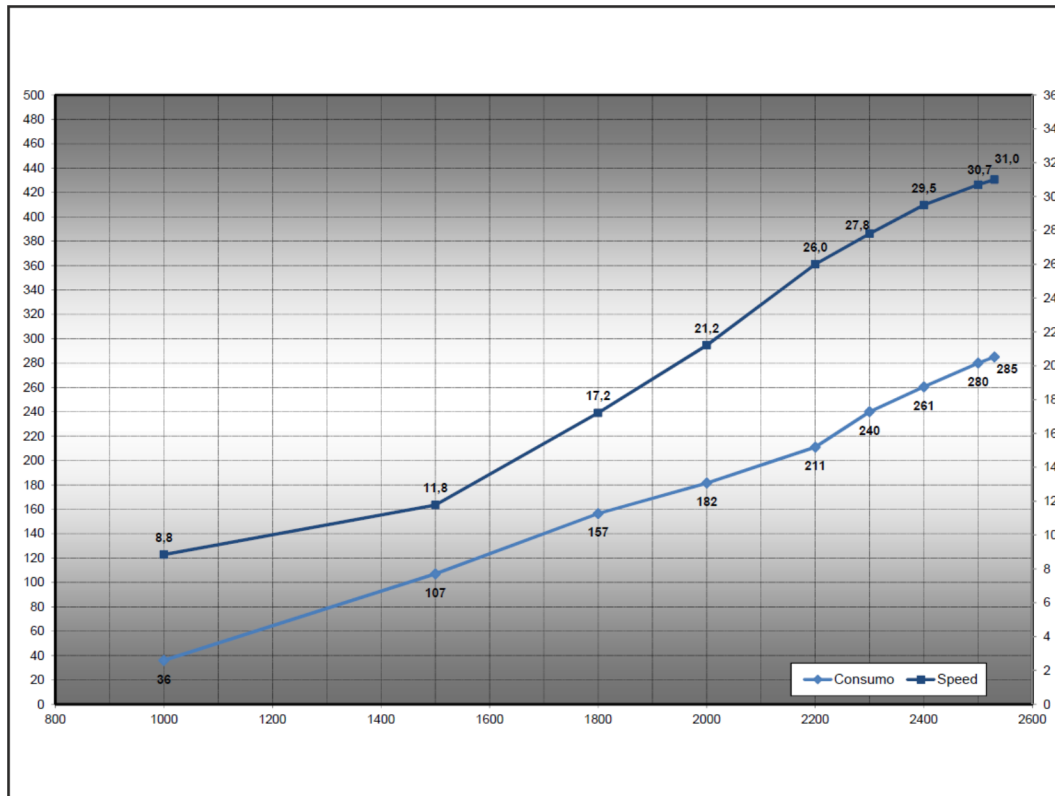
- Two extractors located abaft the engine room that conveys the air outside through openings on hull bulwark
- Two natural ventilation ducts on each side
- One natural extraction duct on each side
- Fans panel for internal air recirculation

Equipment

- One telescopic boat hook
- Five mooring lines
- Fender lines: 18 m (59')
- One anchor chain stopper
- Six fenders
- Six black fender covers
- One Owner's manual
- One AZIMUT warranty service booklet
- Two floating keyrings
- One large bag with logo for manuals
- One remote control holder with logo
- One shower pipe storage bag

TECHNICAL SPECIFICATIONS FLY 53 (FROM HULL 212)

Annex 2 - Performance / consumption chart



TECHNICAL SPECIFICATIONS FLY 53 (FROM HULL 212)

NB

The contents of this document are for informational purposes only and do not constitute an opinion or guarantee regarding the characteristics of the pleasure craft described herein.

Azimut|Benetti S.p.A. therefore does not guarantee the accuracy, completeness or updating of the information and specifications contained in this document and, in particular, declares that certain details and technical specifications described herein may differ for the models available.

Therefore, Azimut|Benetti S.p.A. does not make any guarantee regarding the use of the content, details, specifications or information contained in this document in terms of correctness, accuracy, adequacy, utility, timeliness, reliability, in any case, within the limits established by law.

