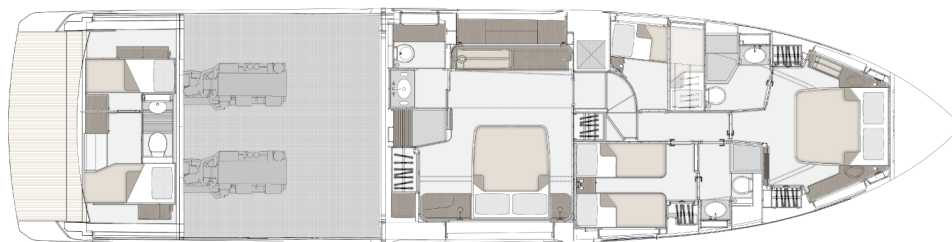
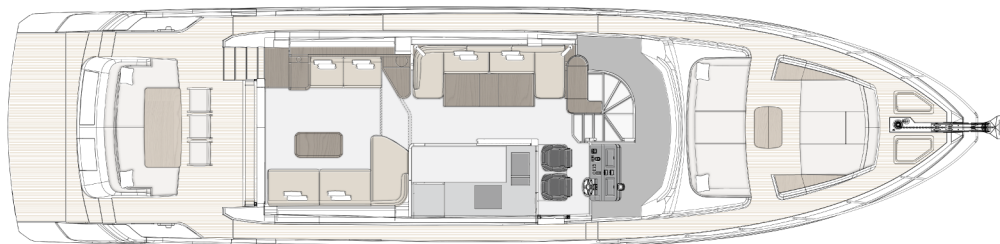
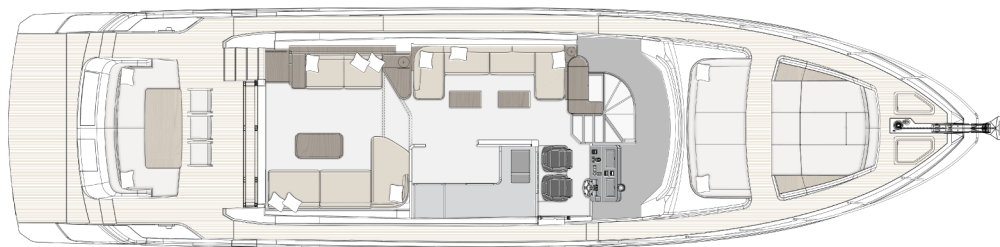
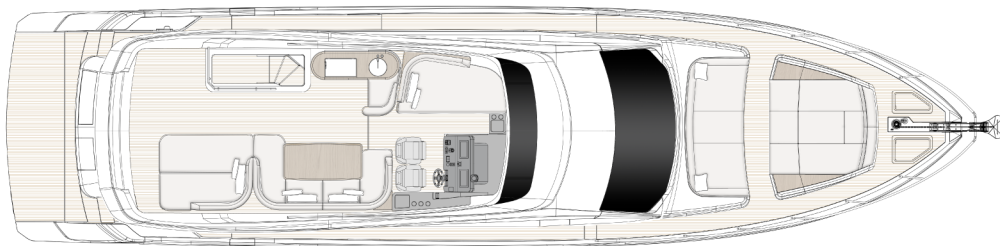


# TECHNICAL SPECIFICATIONS FLY 68 (FROM HULL 265)

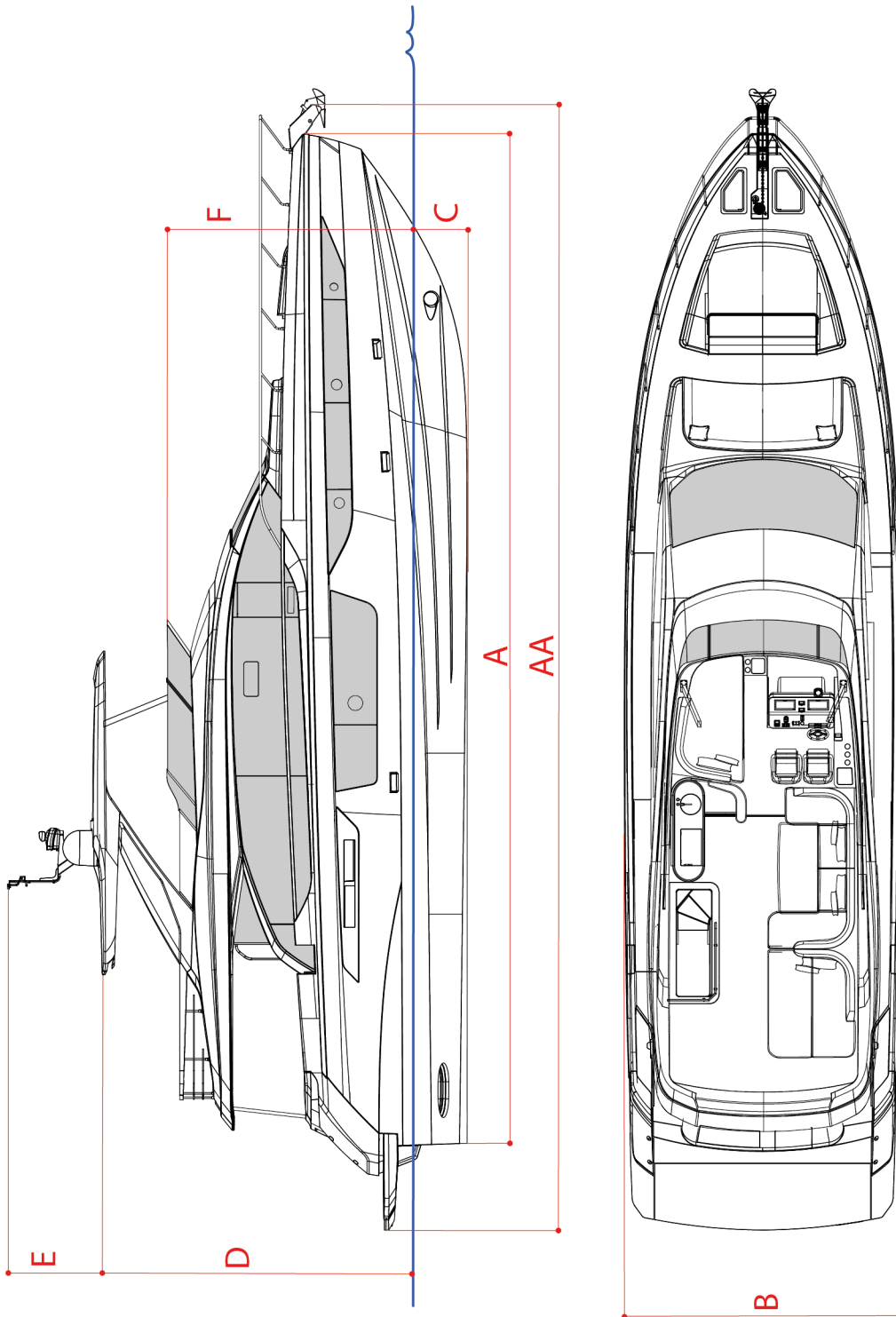
## FLY 68 (FROM HULL 265)

General plans (the imagine is to be considered as indicative only)



# TECHNICAL SPECIFICATIONS FLY 68 (FROM HULL 265)

## Dimensional diagram (figure shown for indicative purposes) WIP



## TECHNICAL SPECIFICATIONS FLY 68 (FROM HULL 265)

### Main characteristics

The following tables list the boat's main characteristics.

#### Dimensions and weights

(AA) Maximum length $L_{MAX}$ ISO 8666 (stern platform, pulpit overhang, bow roller, and rub-rails included)	20.980 m (68' 10")
(A) Hull length $L_H$ ISO 8666 (net GRP)	20.250 m (66' 5")
Waterline length $L_{WL}$ ISO 8666 (with full load)	17.10 m (56' 1")
(B) Hull beam $B_{MAX}$ ISO 8666	5.23 m (17' 2")
(C) Draught $T_{keel}$ ISO 8666 (with full load)	1.14 m (3' 9")
Draught $T_{MAX}$ ISO 8666 (at propellers, with full load)	1.60 m (5' 3")
(D) Height $H_A$ ISO 8666 (from waterline to radar arch STANDARD version)	5.67 m (18' 7")
(D) Height $H_A$ ISO 8666 (from waterline to radar arch HARD TOP version)	5.88 m (19' 3")
(E) Height $H_{mast}$ (from radar arch to light mast)	1.55 m (5' 1")
(F) Height $H_{screen}$ (from waterline to flybridge screen)	4.60 m (15' 1")
Maximum load recommended by the manufacturer ((Max. no. people on board x 75 kg) + (Max. no. people on board x 30 kg baggage))	1,470 kg (3,240.8 lb)

Loaded displacement $m_{LDC}$ ISO 8666 (boat mass with full tanks + max. no. of crew members and personal equipment + life raft, with tender)	43.73 t (43.039 tn l.)
Light displacement $m_{LCC}$ ISO 8666 (boat mass with empty tanks without crew and equipment)	33.75 t (33.217 tn l.)

#### Tank capacity

Diesel tank capacity (total)	3,700 l (977.4 US. liq.gal.)
Fresh water tank capacity	1,000 l (264.2 US. liq.gal.)
Black water tank capacity	350 l (92.5 US. liq.gal.)
Gray water tank capacity	200 l (52.8 US. liq.gal.)
Total capacity of tanks	5,250 l (1,386.9 US. liq.gal.)

#### Layout and structure

Cabins	4 + 1 crew cabins
Beds	8 + 2 crew cabins
Heads	3 + 1 crew cabins
Material	GRP+ CARBON
Hull	Deadrise 18° aft and 21° amidship
Hull designer	Pierluigi Ausonio Naval Architect & Azimut yachts

## TECHNICAL SPECIFICATIONS FLY 68 (FROM HULL 265)

Exterior designer	Alberto Mancini
Interior decorator	Achille Salvagni - Customization requested by the owner developed by the Azimut Style Office

### Approval category and capacity

CE type approval category	A
Maximum capacity	14 people

### Performance

Maximum speed (*)	32 kn
Cruising speed (*)	27 kn
Maximum speed consumption (*)	370 l/h (97.68 US.liq.gal./h)
Cruising speed consumption (*)	293 l/h (77.33 US.liq.gal./h)
Range at maximum speed (*) [including a precautionary 10% of diesel that cannot be pumped from a total of 3700 liters (977.4 US liq.gal.)]	288 nmi
Range at cruising speed (*) [including a precautionary 10% of diesel that cannot be pumped from a total of 3700 liters (977.4 US liq.gal.)]	306 nmi

### ► N.B.

(\*) All performance data specified in the table above apply to a STD Configuration boat (std equipment installed excluding gangway, seakeeper, owner supply, etc.) with clean hull and propellers.

Furthermore, the performance data indicated above have been defined under good sea and wind conditions (Beaufort Scale level 1, Douglas Scale level 1, ambient T<25°C, seawater T=15°C, atmospheric P=1013,25 hPa) with n.3 people on board, 25% fuel, and fresh+gray+black water tanks empty.

Different or harsher sea conditions may significantly affect performance.

With the addition of GYRO + HARD TOP as combined optional, the top speed reduction prediction is -1.0 kn.

### GRP frame

#### CARBON FIBER MANUFACTURE TECHNOLOGY

	CARBON FIBER	FIBER-GLASS
HULL	HYBRID	
DECK	HYBRID	
SUPERSTRUCTURE		X
FLYBRIDGE	X	
RADAR ARCH	X	
HARD TOP	X	
TRANSOM/ PLATFORM		X

#### TYPE OF RESIN

	VINYL ESTER	POLYESTER
HULL SKIN COAT	X	

## TECHNICAL SPECIFICATIONS FLY 68 (FROM HULL 265)

	VINYL ESTER	POLYESTER
HULL CORE CONSTRUCTION	X	
DECK SKIN COAT	X	
DECK CORE CONSTRUCTION	X	
SUPERSTRUCTURE SKIN COAT	X	
SUPERSTRUCTURE SKIN COAT	X	
FLYBRIDGE SKIN COAT	X	
FLYBRIDGE CORE CONSTRUCTION	X	
ENGINE ROOM TRAY	X	
ACCOMMODATION TRAY		X

### Tables of propulsion system component characteristics

#### Engines

Quantity	Two
Manufacturer	VOLVO Penta
Model	D13 - IPS1350
Type	6-cylinder diesel engine
Max. power	2x735 kW (2x1000 hp) @ 2400 rpm

#### Reduction gears / marine gears

Manufacturer	VOLVO Penta
Model	IPS 30
Reduction ratio	1.88:1

#### IPS propellers

Model	Q3
-------	----

Quantity	Four (two counter-rotating twin propellers per IPS drive)
----------	---

### Tables of deck fittings characteristics

#### Anchor

Quantity	One
Weight	40 kg (88.2 lb)
Material	Steel

#### Anchor chain

Quantity	One
Diameter	10 mm (0.39 in)
Length	90 m (295' 4")
Material	galvanized steel

#### Anchor winch

Quantity	One
Engine power	2000 W
Engine voltage	24 V

#### Stern chocks

Quantity	Two
Material	stainless steel

#### Cleats

Quantity - bow	Two
Quantity - midship	Two
Quantity - stern, on mooring station	Two
Material	stainless steel

## TECHNICAL SPECIFICATIONS FLY 68 (FROM HULL 265)

---

### Flybridge

- Accessible from cockpit, through ladder on port side
- GRP external stairway with teak coated steps
- Non-slip floor
- Access door
- Plexiglas flybridge screen
- Azimut logo on side GRP
- Model "68" logo on side GRP
- Stainless steel handrails
- Dining area with C-shaped sofa with backrest and removable cushions for outdoors
- Fore sunbed area
- Table, maximum eight seats, with fixed stainless steel legs
- Life raft seat under sofa (flybridge, starboard side)
- Flybridge bar cabinet, with:
  - Sink built into cabinet with retractable water tap
  - Waste bin
  - Fridge
- Single helm with manual depth/height adjustment
- Adjustable steering wheel with four-spoke steering wheel white painted
- Dashboard consisting of:
  - BRONZE PACKAGE electronic instruments
  - anchor winch control and chain meter counter built in the electronic instrumentation
  - Engine throttles
  - Volvo Penta maneuvering joystick
  - adjustable spotlight command
  - audible alarm controls
  - Communication systems (VHF)
  - Bow thruster controls
  - Trim tab controls
- Scuppers with stainless steel grating and logo
- Lights mast
- Flag pole
- Navigation lights
- Adjustable electric spotlight



#### **N.B.**

Electronic navigation instruments: see relevant paragraph.

---

### Bow

- 2000 W winch
- Anchor winch controls
- Chain locker accessible through hatch provided with drainage
- Stainless steel anchor roller
- Fender storage in fore service compartment
- Sunbed area with non-slip finish
- Chain washing pump
- Two wipers for bow windscreen
- Two stainless steel cleats
- Stainless steel anchor line anti-rubbing protection
- Bow hatch (emergency exit from VIP cabin)
- Bow sofa in GRP complete with locker and removable cushions for outdoors
- Cockpit table in teak
- LED lighting along base of sofa
- Non-slip floor
- Tempered glass windows glued to the surrounding structure without any metal frame
- Scuppers with stainless steel grating and logo

## TECHNICAL SPECIFICATIONS FLY 68 (FROM HULL 265)

---

### Walk arounds

- Refueling: two "Diesel" refueling plugs
- Fresh water filling: one "Water" filling plug  $\Phi 85$  mm
- Black water outlet: one "Waste" outlet water plug  $\Phi 75$  mm
- Rub-rail in stainless steel and high resistance PVC
- Non-slip floor
- Starboard side door
- Stainless steel pulpit with handrail

### Cockpit

- Access to cockpit from platform via GRP ladder on port and starboard side and stainless steel gates
- Teak floor
- Two mooring stations with winches (one per side)
- Cleats on mooring station
- 5-seater C-shaped cockpit bench in GRP integrated in the deck
- Cockpit bench cushions
- Flybridge support posts on sides of cockpit bench
- Saloon access door in painted aluminum with tempered glass, three flat panels sliding to the starboard side
- Scuppers with stainless steel grating and logo
- Locker under port side seating area
- Side access doors (one per side)
- Engine room access from hatch in cockpit floor
- Flybridge access ladder with teak steps and steel handrail
- Lighting with LED spotlights recessed in the ceiling

### Platform

- Hydraulic platform
- Swimming ladder
- Hot and cold water shower head
- Teak floor
- Access to crew room from door on the transom
- INSTALLABLE TENDER (OPT):
  - MAXIMUM DIMENSIONS OF TENDER: 3.30 x 1.70 m (10' 10" x 5' 7")
  - RECOMMENDED TENDER: Pirelli J33
  - MAXIMUM INSTALLABLE PLATFORM LOAD: 552 kg\* (1216.95 lb\*), (the above value considers 352 kg (776.02 lb) of water toys + 200 kg (440.92 lb) for operators and various accessories)



#### **N.B.**

\* liftable load with tender positioned as recommended by the boatyard.

---

### Saloon

It is composed of:

- Wood essence furniture
- Carpeted floor
- One sofa on port side, two seats
- One "L"-shaped sofa on starboard side, four seats
- Provision for TV system with aerial
- GRP coated ceiling
- Wood essence walls
- Roman blinds for stern windows and sliding blind for saloon door
- Two loudspeakers
- Lighting with LED spotlights recessed in the ceiling

## TECHNICAL SPECIFICATIONS FLY 68 (FROM HULL 265)

---

### Dinette

It is composed of:

- Wood essence furniture
- Carpeted floor
- One "C"-shaped sofa on port side, six seats
- Provision for TV system with aerial
- GRP coated ceiling
- Wood essence walls
- Roman blinds for fore port windows
- Dinette table with stainless steel leg
- Lighting with LED spotlights recessed in the ceiling

### Wheelhouse

- Single helm seat with electric depth/height adjustment
- Side door
- Leather adjustable steering wheel with stainless steel spokes
- Internal dashboard consisting of:
  - 10" display
  - BRONZE PACKAGE electronic instruments
  - anchor winch control and chain meter counter built in the electronic instrumentation
  - Engine throttles
  - VOLVO maneuvering joystick
  - audible alarm controls
  - Communication systems (VHF)
  - Bow thruster controls
  - Trim tab controls
  - searchlight control
  - magnetic compass
  - USB socket
  - Adjustable air conditioning outlets
  - horn, anchor winch, windscreen wipers, windshield washers, engine battery parallel, and mute activation switches
  - Emergency panel

---

### ► N.B.

Electronic navigation instruments: see relevant paragraph.

---

### Galley

Located on starboard side, forward of the saloon. It is composed of:

- Laminated floor
- Ceramic glass range with four hobs
- Extractor hood
- Stainless steel double sink
- 180 l (6.36 cu.ft) Fridge / Freezer
- Compact oven combined with a microwave
- Lighting with LED spotlights recessed in the ceiling and LED bars mounted under the wall units

### Corridor

- Below deck access from dinette with carpeted floor
- Lighting with LED spotlights recessed in the ceiling
- Fabric bulwark upholstery
- Staircase grabrails

### Owner's cabin

Full-beam owner's cabin, composed of:

- Double bed on starboard side with fold-away bed base and locker
- Leatherette upholstered headboard
- Two fixed bedside tables
- Wardrobe on bulwark with shelves, hanger bar and mirror
- Seating area on port side, with chest of drawers

## TECHNICAL SPECIFICATIONS FLY 68 (FROM HULL 265)

---

- Lighting with LED spotlights recessed in the ceiling and LED strip at the base of the bed and of the left side step
- Two openable portlights
- Hull windows
- Wooden Venetian blinds
- Wood essence and fabric bulwark upholstery
- Wood essence and lacquered ceilings
- Provision for TV system
- Sockets
- One wardrobe with hanger bars
- One bedside table with drawer for the lower bed
- Fabric-upholstered ceilings
- LED spotlights
- Two wall lights on headboard
- One openable portlight
- Carpeted floor
- Wood essence wall coating
- Wooden Venetian blinds

### Owner's head

Located aft of the owner's cabin

It is composed of:

- Independent access from owner's cabin
- Oval GRP washbasin with lacquered top
- Separate toilet compartment with TECMA toilet and openable portlight
- Mixer tap
- Separate shower enclosure with seating area; flat shower door
- Shower with shower head on ceiling
- Flush-mounting mixer tap for shower
- Storage under the washbasin top
- Lighting with LED spotlights recessed in the ceiling and LED strip under the washbasin
- Wooden Venetian blind
- Laminated shower floor
- Sockets
- Head accessories
- Head air extractor: forced suction from the shower ceiling panel

### Port side guest cabin

Located on port side. It is composed of:

- Two single bed arranged in L shape with locker in the lower bed

### Starboard side guest cabin

Located on starboard side

It is composed of:

- Two single beds with lockers
- Leatherette headboard
- Two wall lights on headboard
- One wardrobe with hanger bar and drawer
- One central bedside table with drawer, between the beds
- Fabric-upholstered ceilings
- Lighting with LED spotlights recessed in the ceiling and LED strip
- One openable portlight
- Carpeted floor
- Wood essence wall coating
- Wooden Venetian blinds
- Fore mirror

### Starboard guest head

Positioned abaft of the VIP cabin, on starboard side

It is composed of:

- Direct access from starboard guest cabin or from the corridor
- GRP washbasin with lacquered top
- Mixer tap
- TECMA toilet

## TECHNICAL SPECIFICATIONS FLY 68 (FROM HULL 265)

- Separate shower enclosure with glass door
- Chromed shower rail
- Flush-mounting mixer tap for shower
- Lighting with LED spotlight recessed in the ceiling and LED bar recessed under the washbasin
- Underbasin drawer with shelves
- Wall unit with mirror
- One openable portlight
- Wooden Venetian blind
- Laminated shower floor
- Head air extractor: forced suction from the shower ceiling panel
- Head accessories
- Sockets

### VIP cabin

Located at the bow of the below deck area, it is accessible via the central corridor

It is composed of:

- Double bed at the center of the boat with collapsible locker
- Leatherette headboard
- Two wardrobes with hanger bars and shelves
- Lighting with LED spotlights recessed in the ceiling with LED bars on the headboard and LED strip at the base of the bed
- Emergency exit in ceiling through concealed rectangular hatchway leading to fore sunbed area
- Direct access to VIP head
- Mirror on bulkhead
- Two openable portlights inserted in windows
- Wooden Venetian blinds
- Wood-upholstered bulwarks
- Carpeted floor
- Fabric-upholstered ceiling panels
- Sockets

### VIP head

Positioned abaft of the VIP cabin, on port side

It is composed of:

- Direct access from VIP cabin
- GRP washbasin with lacquered top
- Mixer tap
- TECMA toilet
- Separate shower enclosure with seating area and glass door
- Chromed shower rail
- Flush-mounting mixer tap for shower
- Lighting with LED spotlight recessed in the ceiling and LED bar recessed under the top
- Underbasin cabinet with drawer
- Wall unit with mirror
- One openable portlight
- Roller-type curtain for shower
- Laminated shower floor
- Head air extractor: forced suction from the shower ceiling panel
- Head accessories
- Sockets

### Crew room

#### Crew cabin

- Access from platform
- Two single beds
- Two wardrobes + storage under the ladder and on starboard bulwark
- One head wall unit
- Laminate-covered bulwark
- GRP ceiling + upholstered panels
- Openable portlight
- Carpeted floor
- LED spotlights

#### Crew head

- TECMA toilet
- Washbasin

## TECHNICAL SPECIFICATIONS FLY 68 (FROM HULL 265)

---

- Chromed mixer tap
- Shower rod
- Wall unit with mirror
- Socket
- Head accessories
- One air extractor

### Electric system

#### Main characteristics

- Shore-powered power supply
- DC electric panel installed in the engine room on the aft bulkhead
- AC electric panel installed in the crew cabin on the port bulwark
- Auxiliary AC/DC electric panel installed in the dinette zone, port side
- Emergency control panel installed in the wheelhouse
- Battery switch control panel located in the cockpit
- Onboard voltages:
  - 230 V - 50 Hz AC
  - 24 V DC from battery set
  - 12 V DC from DC-DC voltage reducer
- Galvanic isolator

#### Generator

- One 19 kW generator
- Remote start up

#### Shore power sockets

- EU one 3P 50 A socket
- The alternate current power sources terminate in the electric panel installed in the crew cabin. The power sources are protected by suitably sized power circuit breakers, and introduced into the network by means of remote control switches.

#### Batteries

- Services: six 95 Ah - 12 V DC batteries

- Engines: four batteries in total, installed in two separate battery sets, two for each engine; each set is composed of two 95 Ah - 12 V DC batteries
- Generator: one 70 Ah - 12 V battery

#### Battery recharging through battery charger

- One 80 Ah - 24 V battery charger for the service batteries/service backup/engine starting
- One 12 Ah - 12 V battery charger for generator starting

#### Lights and sockets

- AC sockets: 230 V for main utility power supply, EU type
- USB sockets
- 24 V LED internal lighting
- 24 V LED external lighting

#### Electronic navigation instruments

- For STD equipment, see the paragraphs on "Flybridge" and "Wheelhouse"
- For a detailed list of alternative/additional equipment available, please refer to the Optionals price list

---

#### ► N.B.

The electronics are constantly being updated, therefore the indicated configuration may be subject to changes.

---

#### Bilge system

- Four electric pumps positioned as follows:
  - two with automatic and/or manual activation in the engine room (fore and aft)

## TECHNICAL SPECIFICATIONS FLY 68 (FROM HULL 265)

---

- one with automatic and/or manual activation under the floor in the owner's cabin
- one with automatic activation underneath access ladder leading below deck
- Two manual pumps with three intake points, positioned as follows:
  - one in the engine room (fore and aft)
  - one (central) in owner's cabin starboard side wardrobe area

### Fire extinguishing system

- One system manual activation control in the cockpit
- One gas fire extinguisher in the engine room

### Fuel system

- One aluminum fuel tank, installed transversally in the engine room, total 3700 l (977.4 US.liq.gal.)
- One diesel tank electronic level gage on wheelhouse display
- One fuel level optical gage on tank
- Two engine VOLVO settling filters
- One generator RACOR filter
- Two tank vents on bulwark, one per side
- Remote engine diesel shut-off via 24 V solenoid valve
- Remote generator diesel shut-off via 12 V solenoid valve
- Refueling plugs on both side decks

### Fresh water system

- 1000 l (264.2 US.liq.gal.) plastic tank located under the fore tray
- Water refill through cap located in the fore part of the starboard walk around
- Shore water intake

- Water pressure pump unit located in the engine room, port aft side (24 V - 50/60 Hz) with electronic control
- 80 l (21.12 US.liq.gal.) water heater located in the engine room, port side
- Hot/cold water in all heads, galley and platform shower head
- Cold water in engine room, cockpit and flybridge
- Fresh water toilet flushing
- One level sensor with electronic indicator on the 24 V electric panel and on wheelhouse display
- System that can be isolated by ACORN manifolds
- Provision for desalination system

### Black water system

- One 350 l (92.5 US.liq.gal.) polyethylene tank under the VIP cabin
- Level sensor
- One tank vent on bulwark with anti-odor filter
- One macerator pump
- Suction point from deck walk around
- Three TECMA toilets
- Sea outlet from tank manually controlled from the wheelhouse through 24 V membrane pump

### Gray water system

- One 200 l (52.8 US.liq.gal.) polyethylene tank under the corridor
- Level sensor with automatic pump control and alarm on the wheelhouse
- Additional 16 l (4.23 US.liq.gal.) plastic tank located under the owner's cabin floor
- Diaphragm pump
- Sea outlet from tank via 24 V membrane pump manifolds

## TECHNICAL SPECIFICATIONS FLY 68 (FROM HULL 265)

---

### Seawater system

- Engine cooling system: includes two seawater intakes with filter and 2,5" ball valve
- Generator cooling system: includes one seawater intake with filter and 1" ball valve
- Chain washing pump with one dynamic seawater intake with valve

### Ventilation/extraction

- Two extractors located abaft the engine room
- One forced ventilation duct and one natural ventilation duct
- Head air extraction system via 24 V gas extractors with control in head

### Other systems

- VOLVO interceptor system
- 24 V electro-hydraulic pump for bathing platform

### Air conditioning system

- Air conditioning type: the system is of the thermally-treated water circulation type, with fancoils located in various rooms
- Cooling unit in engine room, 96000 total BTU/h with inverter technology
- One seawater pump and one fresh water circulation pump
- Fan coils distribution:
  - PORT GUEST CABIN: one AP1 - 4480 BTU/h -
  - STARBOARD GUEST CABIN: one AP3 - 6200 BTU/h -
  - SALOON: two AP5 - 9200 BTU/h (18400 BTU/h) -
  - GALLEY: one AP5 - 9200 BTU/h -
  - CREW ROOM: one AP5 - 9200 BTU/h -

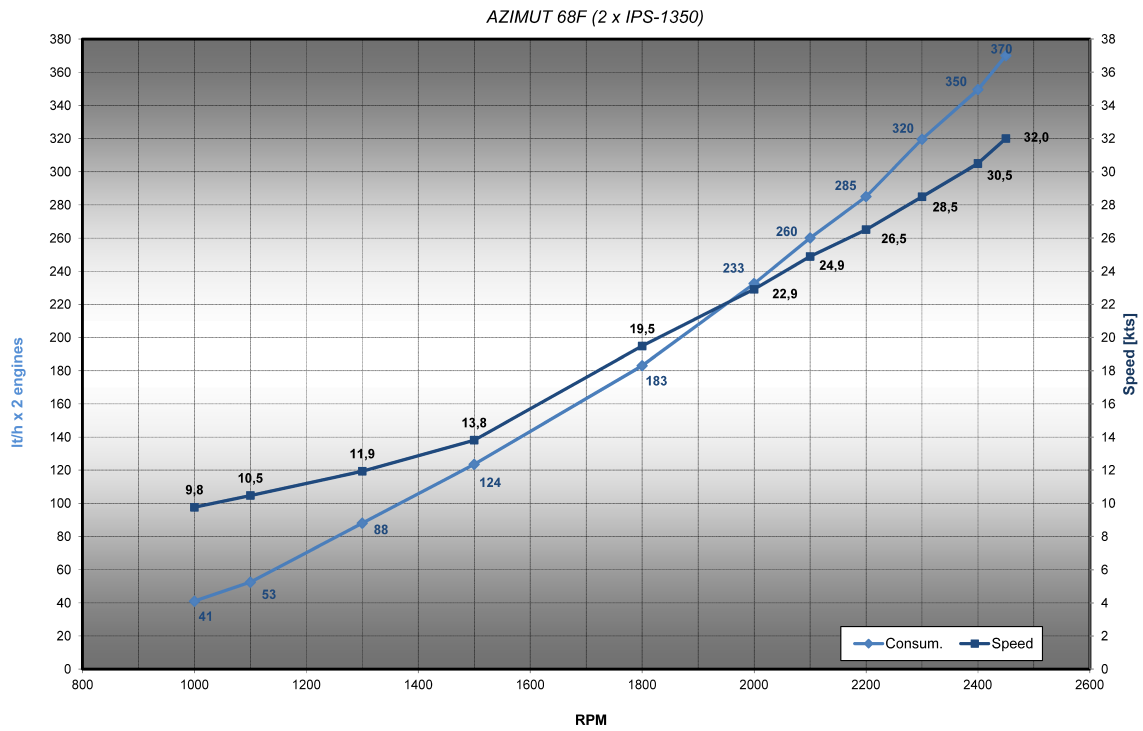
- OWNER'S CABIN: one AP8 - 12500 BTU/h -
- VIP CABIN: one AP8 - 12500 BTU/h -
- WHEELHOUSE: two AP8 slim - 12500 BTU/h (25000 BTU/h) -
- DINETTE: one TWIN12 - 12000 BTU/h -
- Control panel for each area

### Equipment

- One telescopic boat hook
- Five mooring lines
- Fender lines: 24 m (78'9")
- One anchor chain stopper
- Eight fenders
- eight black fender covers
- One Owner's manual
- One AZIMUT warranty service booklet
- One set of stainless steel cutlery
- One set of porcelain plates
- One set of glasses
- Three floating keyrings
- Mesh covers for windows
- One large bag with logo for manuals
- One remote control holder with logo
- One shower pipe storage bag

# TECHNICAL SPECIFICATIONS FLY 68 (FROM HULL 265)

## Performance / consumption chart



## TECHNICAL SPECIFICATIONS FLY 68 (FROM HULL 265)

---

### **NB**

The contents of this document are for informational purposes only and do not constitute an opinion or guarantee regarding the characteristics of the pleasure craft described herein.

Azimut|Benetti S.p.A. therefore does not guarantee the accuracy, completeness or updating of the information and specifications contained in this document and, in particular, declares that certain details and technical specifications described herein may differ for the models available.

Therefore, Azimut|Benetti S.p.A. does not make any guarantee regarding the use of the content, details, specifications or information contained in this document in terms of correctness, accuracy, adequacy, utility, timeliness, reliability, in any case, within the limits established by law.

