



FERRETTIYACHTS



NAVETTA 37 / Year 2018



Location: Limassol Marina



Bow Area



Bow Area



Bow Area



Bow Area



Sundeck



Sundeck



Sundeck



Sundeck



Sundeck



Sundeck



Sundeck Jacuzzi



Sundeck Jacuzzi



Upper Deck



Upper Deck



Upper Deck



Upper Deck



Cockpit Area



Cockpit Area



Helm Station



Helm Station



Main Salon



Main Salon



Main Salon



Main Salon



Main Salon



Dining Area





Salon





Day Head





Galley



Master Cabin



Master Cabin



Master Cabin



Master Cabin



Master Cabin



Master Head



Master Head



Master Head



Guest Cabin 1



Guest Cabin 1



Guest Cabin 1



Guest Cabin 1



Guest Head 1



Guest Head 1



Guest Cabin 2



Guest Cabin 2



Guest Head 2



Guest Head 2



Guest Cabin 3



Guest Cabin 3



Guest Head 3



Guest Head 3



Twin Cabin



Twin Cabin



Twin Cabin



Twin Head



Crew Cabin



Crew Area



Storage Room



Storage Room



Engine Room



FERRETTIYACHTS

SPECIFICATIONS

| | |
|-----------------------------------|-----------------|
| Length overall: | 38 m / 123' |
| Beam overall: | 8,00 m / 26'30" |
| Draft at full load: | 2,27 m / 7'5" |
| Fuel capacity: | 29,900 L |
| Fresh Water capacity: | 3,200 L |
| Black/Grey Water capacity: | 3000 L |
| Cabins: | 5 + 3 crew |
| Head compartments: | 3 + 3 crew |
| Max Speed | 14 kts |
| Exterior Design | Zuccon |

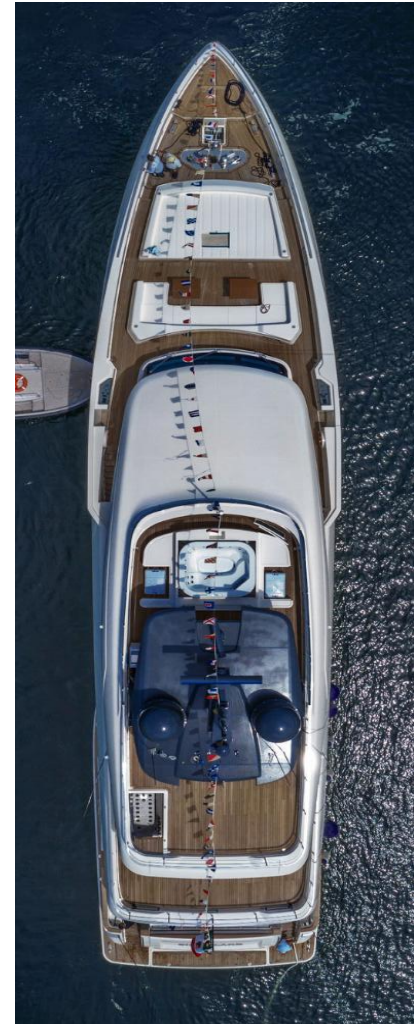
Year: 2018

Engine: 2 x MAN 12V LE446-1400 CR kg 2830, 1029 kW

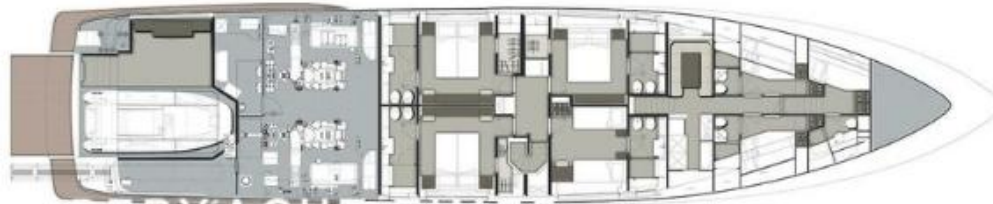
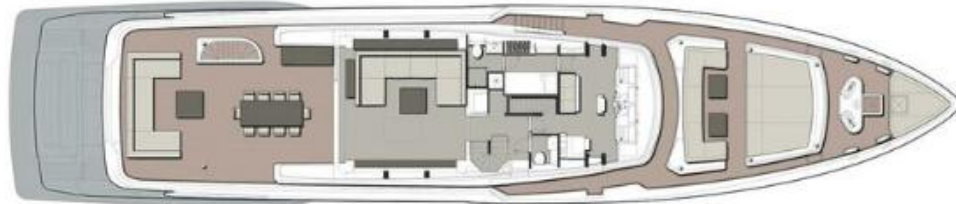
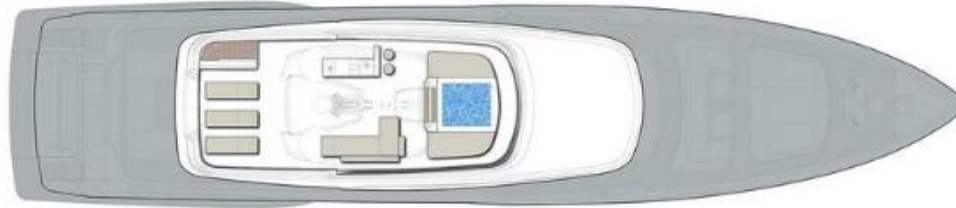
Engines Hours: 3721

Generators: 2 x Kohler, 70 kW, 50 Hz

Generators Hours: 6678







OPTIONS LIST

EQUIPMENT

- Fresh water pump: 2x ECOINOX 518, 380V 50Hz
- Bi1ge/fire-fighting motor pump: MBMA 50/160 3,7kW
- Bilge pump: ACM 501 BT
- Hot water recirculation pump: 1x UP 20 - 30 N150
- Holding tank drain pump: ECO MVG44 380V 50Hz
- Grey waters tank drain pump: ECO MVG44 380V 50Hz
- Hot water heater: 2x 100 liters 220V 50Hz lx 200 liters 220V 50Hz
- Air conditioning : 32000 BTU
- Air conditioning pump: BC41/1E - CB41/1E 220/380V 50Hz
- House battery charger: 24V 100A
- Engine battery charger: 24V 50A
- Generator battery charger: 24V 20A
- Emergency battery charger: 24V 50A
- Radio battery charger: 24V 20A
- Shore-power frequency converter: ASEA 36
- Engine batteries: 2x 24V 200Ah
- House batteries: lx 24V 696Ah
- Generator batteries: 2x 24V 120Ah
- Radio batteries: lx 24V 120Ah
- Emergency batteries: 1x 24V 600Ah
- CCTV security system:
- 1x FLIR M62SCS 30 Hz
- 1x PTZ SAMSUNG mast camera
- 8x fixed SAMSUNG cameras (exterior + ER + ECR + garage) with video recorder
- Anchor: 2x 180 kg Pool
- Anchor chain: Cal. 16 mm 2x150 m
- Anchor winch: 2x ERCOLE 400 V 50 Hz 4 kW
- Warping: 2x CAPSTAN 380 V 50 Hz 2,5 kW
- Engine room extractors: 2x ELL/R 315/2 380 V
- Fuel separator prefilters (engines) MM/EE: 2x MAN
- Fuel decantation filters (generators) DD/EE: 2x SEPAR
- Fue1 pump transfer: lx CP 40 380V
- Auxiliary fuel pump transfer: lx CP 40 24V
- Puro Water System
- Fuel purification unit: AlfaLaval MMB 304
- Thruster system pump: 2 x CB 20E 24/380V
- Water maker: IDROMAR 250 + 250 l/h
- Black water treatment plant: HAMMAN
- Stabilizer System (with Zero Speed): ABT.TRAC

OPTIONS LIST

NAVIGATION

- Fully integrated i-Bridge (ONYX+TEAMITALIA) with 5 customizable screens.
- Furuno 12kW x-band radar
- Furuno 6kW x-band radar
- Simrad Auto-pilot
- Simrad steering feedback unit Furuno transducer
- Simrad transducer
- Furuno GPS antenna (3)
- Furuno MaxSea chartplotter
- Furuno ECDIS
- Simrad fluxgate compass
- Simrad gyro-compass
- Bridge wings with
- Simrad 1542 repeaters
- Sailor VHF DSC (2) with remote handset in Captain's cabin and crew mess AC Marine
- VHF antenna (3)
- Sailor SSB MF/HF Banten SSB antenna (2)
- Sailor Navtex receiver
- Sailor Navtex antenna
- Safe sea handheld GMDSS VHF with extra battery (2)
- icon buoyant handheld VHF
- Sailor EPIRB
- Sailor SART

SECURITY, FIRE FIGHTING & SAFETY

EQUIPMENT

- CCTV system with IP streaming Firefighting equipment:
- FM200 in ER
- Sprinklers in bow and stem garage
- Consilium fire detection system covering the whole yacht with multiple call points. Portable fire extinguishers (25)
- Fire pump with fire mains (7) with access to all areas onboard Fire blankets (2)
- B.A. kits and suits (2)
- Life jackets: 28 adults, 2 kids
- Liferafts (2) for 10 persons each
- Pyrotechnics (10 red hand flares, 10 white hand flares, 4 buoyant

orange smoke, 16 rocket rocket parachute flares). Line throwers and lifebuoys (2) with self igniting light.

- Immersion suits (20) Draeger smoke hoods (4)
- SOLAS medical kit / pharmacy (2)

FOOD & BEVERAGE

- 2 large MIELE fridges 6 smaller marine fridges
- 1 large MIELE freezer
- 2 smaller marine freezers
- 3 ice-makers
- 1 microwave
- 1 Large galley oven
- Large cooking top with extraction RATIONAL professional oven

OPTIONS LIST

ENTERTAINMENT

- Fully integrated AV/IT system with individual zones controlled by local mini-iPad
- - party everywhere mode available. KVH HD11 antenna KVH HD11 controller
- Shakespeare Seawatch TV/FM antenna
- Pepwave router dual-SIM 4G
- Master cabin: Samsung 55", surround system, Apple TV, Sky UK decoder, IPTV box, BR DVD reader.
- Guest cabins (4): Samsung 55", Apple TV, Humax satellite decoder, Yamaha
- speakers (2)
- Main salon: Samsung 55", surround system (Sonance speakers), Apple TV, Sky UK decoder, IPTV box, BR DVD reader, Samsung 82"
- Main deck cockpit: Sonance speakers (4)
- Upper salon: Samsung 55", surround system (Sonance speakers), Apple TV, Sky UK decoder, IPTV box, BR DVD reader. Upper deck

cockpit: Sonance speakers (4)

- Sundeck: Samsung 49" on rotating support, Apple TV, Humax satellite decoder, Sonance speakers (4) and subwoofers (2), Dj plug
- Bow area: Sonance speakers (2)
- Cordless phones in all cabins and salons, seamless WiFi coverage everywhere onboard

TENDERS AND TOYS

- Williams Dieseljet 565
- Seadoo GTX 300
- 2 seabobs
- Diving compressor with full diving kit
- Paddle board
- 2 Inflatable platforms with set of steps
- Wakeboard

CONTACT INFO

BLUE POINT YACHTING LTD





THIS DOCUMENT IS VALID AS A PRELIMINARY PRESENTATION ONLY

This brochure in no way constitutes a contract of sale for the boatyard's vessels to any person or company. All information contained herein, including but not limited to technical and performance data, illustrations, and drawings, is non-binding and for purposes of illustration only. Developer is not required to deliver a unit in exact accordance with any image or floor plan depicted.

Despite efforts to ensure the greatest possible accuracy, Ferretti Navetta 37 design is currently on going, therefore images are valid as artist's rendering only. It is not possible to ensure that all information is up to date.