



FERRETTIYACHTS

CUSTOM LINE
NAVETTA 30
Year 2022





Location: Cannes, France



Sundeck



Sundeck



Sundeck



Sundeck



Upper Deck



Upper Deck



Upper Deck



Cockpit Area



Cockpit Area



Helm Station



Main Salon



Main Salon



Main Salon



Dining Area



Salon









Galley



Master Cabin



Master Cabin



Master Cabin



Master Cabin



Master Cabin



Master Cabin



Master Head



Master Head



VIP Cabin



VIP Cabin



VIP Head



VIP Cabin Port



VIP Head Port



Twin Cabin



Twin Cabin Port



Twin Cabin Port



FERRETTIYACHTS

SPECIFICATIONS

Length overall:	28,43 m / 93'3'
Beam overall:	7,31 m / 24'
Draft at full load:	2,20 m / 7'3''
Fuel capacity:	14,500 L
Fresh Water capacity:	2,500 L
Black/Grey Water capacity:	1800 L
Cabins:	5 + 3 crew
Head compartments:	6 + 3 crew
Max Speed	15 kts
Cruise Speed	13 kts
Exterior Designer	Filippo Salvetti
Interior Designers	Antonio Citterio & Patricia Viel

Year: 2022

Engine: 2 x MAN V8-1000 power 1000 mhp (735 kW) @ 2300 RPM

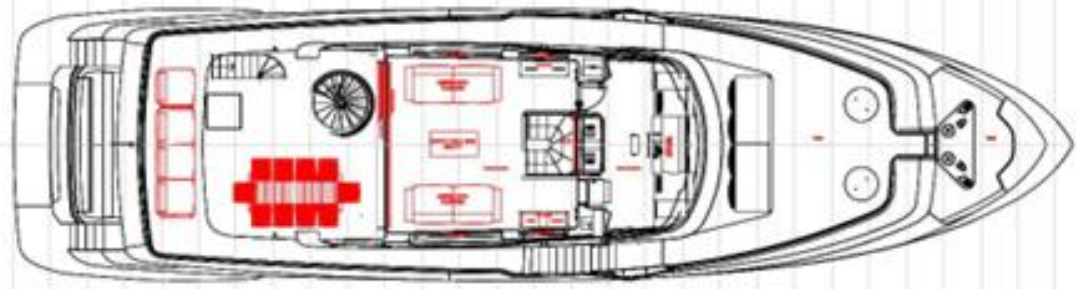
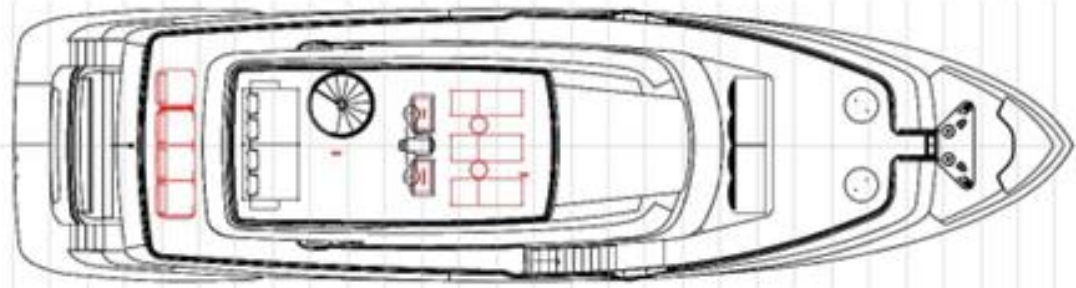
Engines Hours: 710 hours (2023)

Generators: 2 x 35 kW KOHLER 35EFKOZD 1-phase 230V - 50Hz @ 1500 RPM with soundproof casing

Generators Hours: Port 1455 hours , Starboard 1495 hours (2023)







1 2 3 4 5 6 7 8 9 10 11 12 13 14 15 16 17 18 19 20 21 22 23 24 25 26 27 28 29 30 31 32 33 34 35 36 37 38 39 40 41 42 43 44 45 46 47 48 49 50 51 52 53 54 55 56 57 58 59 60 61 62 63 64 65 66 67 68 69 70 71 72 73 74 75 76 77 78 79 80 81 82 83 84 85 86 87 88 89 90 91 92 93 94 95 96 97 98 99 100

OPTIONS LIST

- Stabilizers Zero Speed fins at anchor and underway standard
- Gyro stabilizers at anchor
- Pullman bed in the portside guest cabin
- Sliding bed in the starboard side guest cabin
- Custom interior furniture selected by Owner
- Gross Tonnage <200 GT
- Certification Design Category "A" 2013/53/EU Directive – RINA certifications modules B + F + Aa (sound emission)
- MIELE galley appliances upgrade
- Wine cooler under counter
- Drawer fridge for bottles on the sun deck
- Texan grill in sun deck upgrade
- Ice maker in sun deck (with independent tank)
- Professional icemaker in main deck pantry
- Waste mincer in the galley sink 6
- Washer and dryer MIELE Profess. upgrade
- Stern thruster 30 Hp hydraulic double propeller
- Floor teak covering with black caulking on sun deck and forward triangle area
- Treatment system for black water HAMANN
- Frequency converter 50Hz
- Centralized system for engine/inverters/generators oil change
- Fuel oil filling station in garage for diesel tender
- Active carbon filters
- Water softener
- Drinking water UV sterilizer
- Water maker: IDROMAR 500 l/h (duplex 250+250l/h) upgrade
- Automatic battery charger on generators
- Fuel oil filter ALFA LAVAL
- Hand shower with removable pole (hot/cold fresh water)
- Teak for the sofa on the superstructure at bow
- Underwater lights – 10 in total
- Stainless-steel handles on main deck cockpit (couple)
- Stainless-steel handles on upper deck cockpit (couple)
- Additional handrail for gangway
- Bimini for dinette at bow (manual)
- Bimini top with carbon fibre poles on sun deck aft
- Fixed control station in the cockpit with cover
- Anchor chain with 13mm diameter and 150m length

OPTIONS LIST

- Courtesy lights and dimmers for exteriors
- Dimmer lights for interiors
- Window with porthole in galley
- Air Conditioning Super Tropical
- Curtains: Electrical raising in main deck
- Curtains: Electrical raising for lower deck (4 cabins)
- Electrical raising of curtains in upper deck saloon
- Decorative lights under furnitures in lower, main and upper decks
- Decorative lighting strips
- Bar cabinet in main deck cockpit
- Air extraction in the lower deck cabins' bathrooms
- Additional lighting in wardrobes of cabins
- Lateral door on saloon portside – manual opening
- Lateral door on saloon starboard side – manual opening
- Electric aft door in upper deck saloon
- Automatic opening aft glass door in main deck saloon
- Super premium integrated bridge upgrade
- FLIR camera night vision
- Auto identification system AIS SIMRAD TX-RX NAIS5007
- Super Premium Wi-Fi upgrade
- Package Internet 5G PLATINUM
- All-in-one remote audio-video control with Apple iPad
- A/V Package domotic area A
- A/V Package domotic area B
- Package premium sound external areas – SONANCE 6,5"
- A/V Package premium sound area A
- Antenna TV SAT KVH HD8 with receiver in saloon and empty dome
- TV 27" in the galley
- TV SAMSUNG 55" in master cabin
- TV 55" LCD/LED thin with up & down lift in upper deck saloon
- TV 55" LCD/LED thin with electric raising device in ceiling of main deck saloon
- Frame TV SAMSUNG in lower deck cabins upgrade
- Aft garage ceiling electrohydraulic travel, for hauling and launching the jet ski (saddles included)
- Tender : WILLIAMS 435 Turbojet



THIS DOCUMENT IS VALID AS A PRELIMINARY PRESENTATION ONLY

This brochure in no way constitutes a contract of sale for the boatyard's vessels to any person or company. All information contained herein, including but not limited to technical and performance data, illustrations, and drawings, is non-binding and for purposes of illustration only. Developer is not required to deliver a unit in exact accordance with any image or floor plan depicted.

Despite efforts to ensure the greatest possible accuracy, Ferretti Navetta 30 design is currently on going, therefore images are valid as artist's rendering only. It is not possible to ensure that all information is up to date.



CONTACT INFO

BLUE POINT YACHTING LTD

