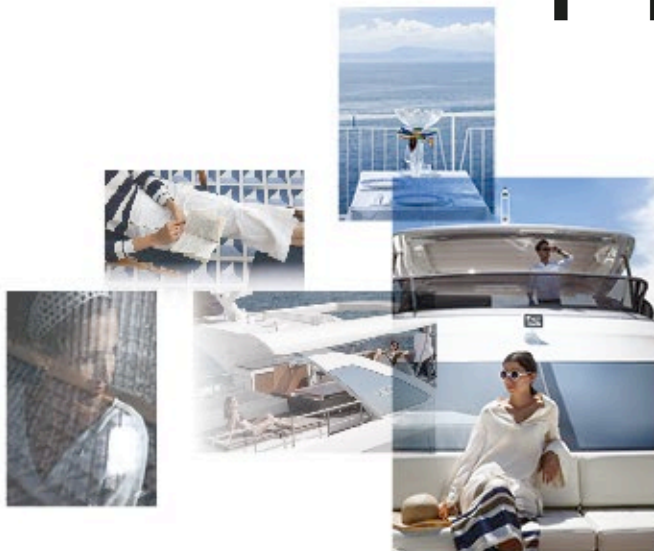




FLY 53

2023



SECONDHAND SELECTION

Flybridge
Collection



Kallithea Marina, Athens

SECONDHAND SELECTION



EXTERNAL VIEW

SECONDHAND SELECTION



EXTERNAL VIEW

SECONDHAND SELECTION



EXTERNAL VIEW

SECONDHAND SELECTION



EXTERNAL VIEW

SECONDHAND SELECTION



EXTERNAL VIEW

SECONDHAND SELECTION



COCKPIT

SECONDHAND SELECTION



FLYBRIDGE

SECONDHAND SELECTION



FLYBRIDGE

SECONDHAND SELECTION



SALOON & DINETTE

SECONDHAND SELECTION



SALOON

SECONDHAND SELECTION



SALOON

SECONDHAND SELECTION



GALLEY

SECONDHAND SELECTION



HELM STATION

SECONDHAND SELECTION



HELM STATION

SECONDHAND SELECTION



MASTER CABIN

SECONDHAND SELECTION



MASTER CABIN

SECONDHAND SELECTION



MASTER HEAD

SECONDHAND SELECTION



VIP CABIN

SECONDHAND SELECTION



VIP CABIN

SECONDHAND SELECTION



VIP HEAD

SECONDHAND SELECTION



GUEST CABIN

SECONDHAND SELECTION



CREW CABIN

SECONDHAND SELECTION



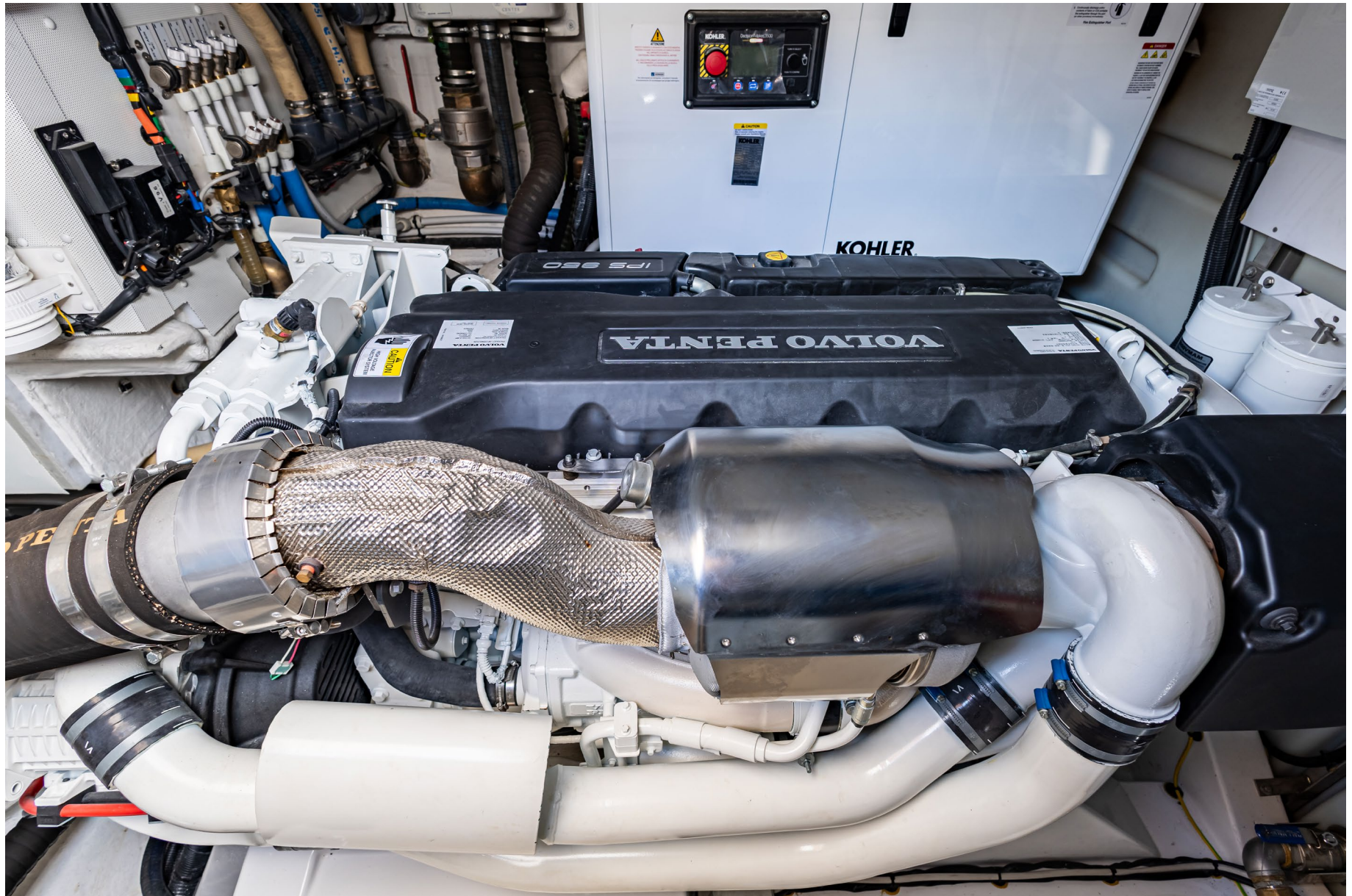
ENGINE ROOM

SECONDHAND SELECTION



ENGINE ROOM

SECONDHAND SELECTION



ENGINE ROOM

SECONDHAND SELECTION

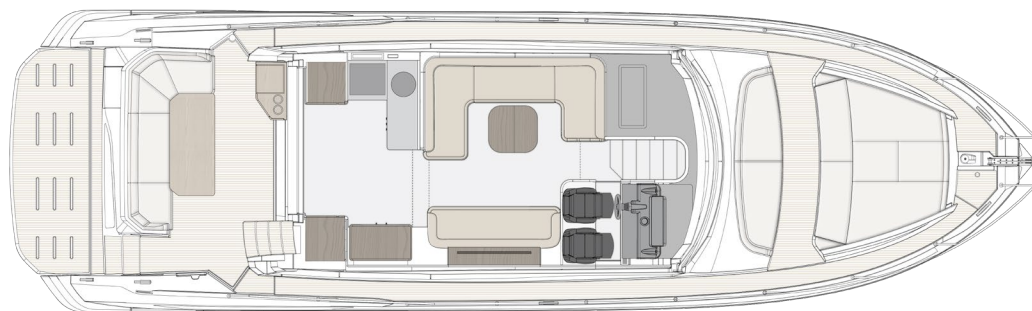
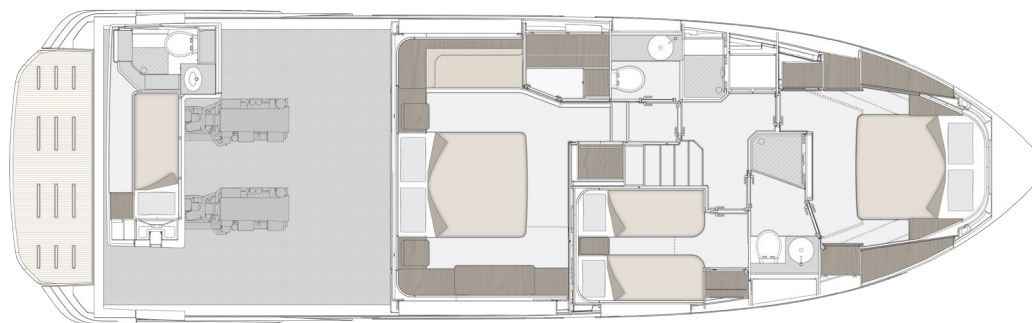
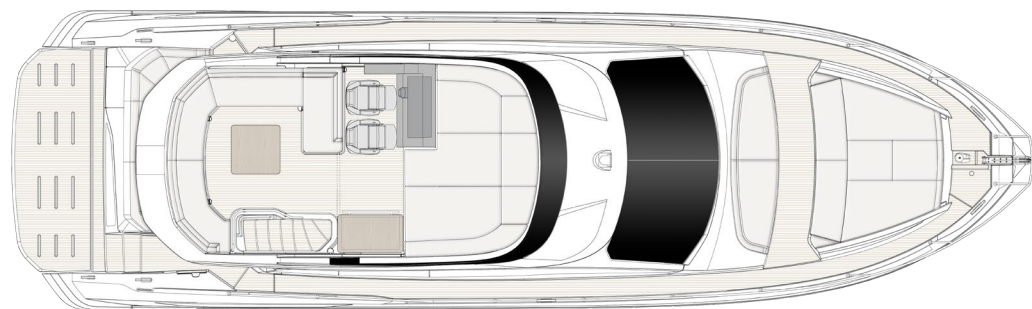
| | |
|-----------------------|-----------------|
| Length overall | 16.78 m / 55'1" |
| Beam max | 4.95 m / 16'3" |
| Draft | 1.41 m / 4'8" |
| Fuel capacity | 2400 L |
| Water capacity | 590 L |
| Holding Tank capacity | 350 L |
| Cabins | 3 + 1 crew |
| Head compartments | 2 + 1 crew |
| Building material | GRP + CARBON |
| Displacement | 30,00 tons |

Year: 2023

Engine: 2 x Volvo Penta IPS 950 D11, 725 hp

Engines Hours: 60

Generator: KOHLER 18 KW





1. Propulsion & Steering

- Proportional bow thruster (8kW)
- Automatic Volvo Interceptor system

2. Electrical & Power Systems

- Kohler Generator (18kW)
- Racor filter for generator
- Galvanic isolator
- Dimmer lights for interiors (salon and cabins)

3. Comfort & Climate Control

- Air Conditioning (60,000 BTU)
- Mosquito nets for portholes
- Roman shade curtains for cabins (replacing standard)

4. Deck & Exterior Features

- Electric mooring winches in cockpit
- N.2 additional cleats on transom
- Telescopic gangway
- Teak in cockpit
- Painted hull and gunwale
- Flagpole

5. Entertainment & Outdoor Living

- Bimini on flybridge (automatic)
- Flybridge furniture with refrigerator and barbecue
- Flybridge openable hi-lo table in teak
- Foredeck lounge with convertible bench/sunbed (Batyline fabric)
- Sunshade sail on bow with removable carbon fiber poles
- Bow sunbathing cushions (with cover, Batyline fabric)
- Cockpit table in teak (fixed)
- Covers for exterior (flybridge helm seat, dashboard, sofa)
- Cover for flybridge sunbathing cushions on bow

6. Interior Upgrades & Amenities

- Decor upgrade
- Hi-lo system for TV in salon
- Carpet Besana Moon 189 (main and lower deck)
- Wooden floor in dinette
- Vanity furniture in master cabin
- Sofa bed in dinette (includes automatic hi-lo system for dinette table)
- Crew cabin

7. Plumbing & Water Systems

- Water maker predisposition
- Toilet with bidet faucet feature (master and VIP head)
- Shore water plug

8. Appliances & Convenience

- Miele Appliances (oven and cooktop upgrade)
- Washer dryer combo unit
- Set of cutlery, crockery, and glasses

9. Navigation & Electronics

- Garmin Gold package
- Electric searchlight
- Additional control for electric searchlight
- Predisposition for SAT TV Antenna TV5/TV6

10. Protection & Maintenance

- Mesh covers for windows
- Extra conduits

11. Water Toys

- Sea Doo Spark Trixx



CONTACT INFO

AZ YACHTING HELLAS S.A.





THIS DOCUMENT IS VALID AS A PRELIMINARY PRESENTATION ONLY

This brochure in no way constitutes a contract of sale for the boatyard's vessels to any person or company. All information contained herein, including but not limited to technical and performance data, illustrations, and drawings, is non-binding and for purposes of illustration only. Developer is not required to deliver a unit in exact accordance with any image or floor plan depicted. Despite efforts to ensure the greatest possible accuracy, therefore images are valid as artist's rendering only. It is not possible to ensure that all information is up to date.