

AZIMUT

ATLANTIS
— 51 —
M/Y 2019



SECONDHAND SELECTION

ATLANTIS
COLLECTION



LOCATION: AYIA NAPA MARINA ,CYPRUS

SECONDHAND SELECTION



EXTERNAL VIEW

SECONDHAND SELECTION



EXTERNAL VIEW

SECONDHAND SELECTION



EXTERNAL VIEW

SECONDHAND SELECTION



EXTERNAL VIEW

SECONDHAND SELECTION



EXTERNAL VIEW

SECONDHAND SELECTION



EXTERNAL VIEW

SECONDHAND SELECTION



EXTERNAL VIEW

SECONDHAND SELECTION



EXTERNAL VIEW

SECONDHAND SELECTION



SALON

SECONDHAND SELECTION



SALON

SECONDHAND SELECTION



GALLEY

SECONDHAND SELECTION



MASTER CABIN

SECONDHAND SELECTION



MASTER CABIN

SECONDHAND SELECTION



MASTER CABIN

SECONDHAND SELECTION



MASTER CABIN HEAD

SECONDHAND SELECTION



GUEST CABIN

SECONDHAND SELECTION



GUEST CABIN

SECONDHAND SELECTION



GUEST CABIN

SECONDHAND SELECTION



GUEST CABIN HEAD

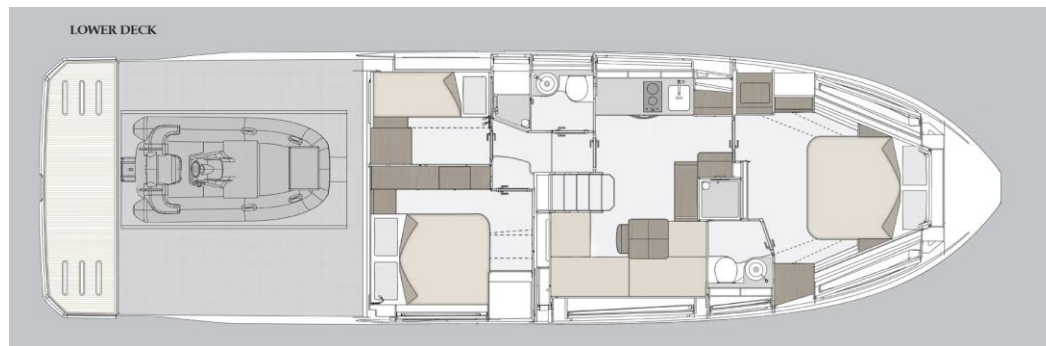
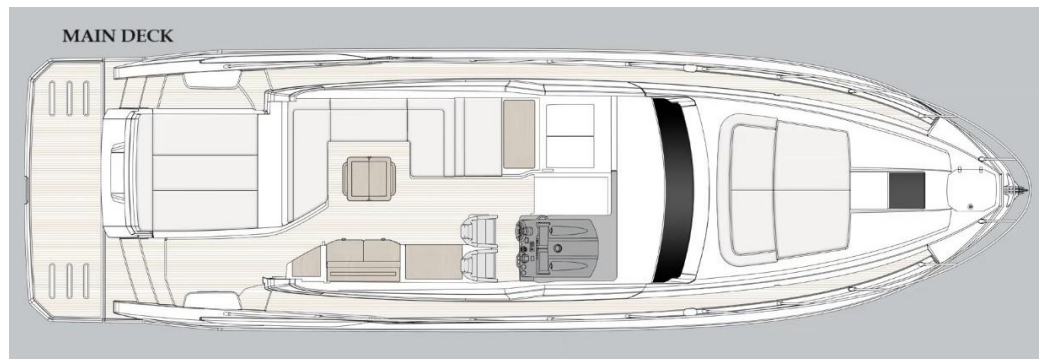
SECONDHAND SELECTION

Length overall (incl. pulpit)	16.18 m (53'1")
Beam max	4.55 m (14' 11")
Draft (incl. props at full load)	1.30 m (4' 3')
Displacement (at full load)	22,3 tones
Maximum speed	35 kn
Cruising speed	30 kn
Fuel tank capacity	1500 L
Water tank capacity	450 L
Holding tank capacity	250 L
Cabins	3
Berths	6
Head compartments	2
Building material	GRP
Exterior & Interior Design	Neo Design
Interior designer	Neo Design

Engines: 2 x Volvo D8 IPS 800, 600 HP

Engines Hours: 265

Generator: ONAN 13.5 kW



Technical Data and General Arrangement

SECONDHAND SELECTION



OPTION LIST

- Stabilizers Seakeeper
- Generator ONAN 13.5 kw
- Miele appliances
- Lifting platform
- Black water tank
- Grey water tank
- Garage with electric winch
- Chaincounter in main helm
- Electric searchlight
- Bow thruster
- Electric winches
- Racor filter for generator
- Double racor filters
- Rubber rub-rail with stainless steel insert
- Manual sliding window on portside
- Extra conduits
- Shore water plug
- Predisposition for watermaker
- Auto dynamic trim Volvo Interceptor
- Telescopic gangway
- Airconditioning 60.000 BTU
- Cockpit Airconditioning
- Toilet with bidet faucet feature in Master & VIP heads
- Raymarine Gold Package, includes:
 - Axiom 12" Display screen
 - i70s
 - Ray90
 - VHF
 - Radar Quantum
 - Plotter
 - Autopilot
 - GPS
- Refrigerator/Freezer in cockpit
- Painted cockpit furniture in Urals Grey
- Hi-lo system for TV in cockpit
- Predisposition for Antenna SAT TV5/TV6
- Cockpit removable armchairs
- Upgrade for external cushion in Batyline fabric
- Bow sunbathing cushions with Bimini
- Mesh covers for windows
- Hauling-lauching system for tender
- Raymarine AIS 700
- Estech in cockpit and on swim platform
- Aft bimini tent
- Tender Williams 285



CONTACT INFO

Marios Iordanous
BLUE POINT YACHTING LTD

sales@bpyachting.com

Mob. +357 99 626 993





THIS DOCUMENT IS VALID AS A PRELIMINARY PRESENTATION ONLY

This brochure in no way constitutes a contract of sale for the boatyard's vessels to any person or company. All information contained herein, including but not limited to technical and performance data, illustrations, and drawings, is non-binding and for purposes of illustration only. Developer is not required to deliver a unit in exact accordance with any image or floor plan depicted. Despite efforts to ensure the greatest possible accuracy, Azimut Atlantis 51 design is currently on going, therefore images are valid as artist's rendering only. It is not possible to ensure that all information is up to date.