



MY 2002



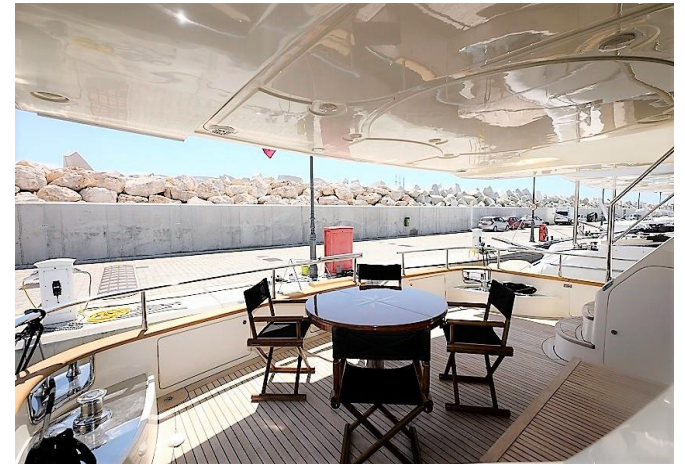
SECONDHAND SELECTION

Flybridge
Collection



€ 980.000 VAT Paid - Limassol

SECONDHAND SELECTION



EXTERNAL VIEWS

SECONDHAND SELECTION



EXTERNAL VIEWS

SECONDHAND SELECTION



FLYBRIDGE

SECONDHAND SELECTION



FLYBRIDGE

SECONDHAND SELECTION



FLYBRIDGE

SECONDHAND SELECTION



FLYBRIDGE

SECONDHAND SELECTION



SALON AREA

SECONDHAND SELECTION



DINING AREA

SECONDHAND SELECTION



GALLEY

SECONDHAND SELECTION



HELM STATION

SECONDHAND SELECTION



HELM STATION

SECONDHAND SELECTION



MASTER CABIN

SECONDHAND SELECTION



MASTER CABIN

SECONDHAND SELECTION



MASTER HEAD



VIP CABIN

SECONDHAND SELECTION



VIP HEAD



GUEST CABINS

SECONDHAND SELECTION



GUEST HEAD

SECONDHAND SELECTION



GUEST CABIN

SECONDHAND SELECTION



GUEST HEAD

SECONDHAND SELECTION



CREW CABIN



ENGINE ROOM

SECONDHAND SELECTION



ENGINE ROOM

SECONDHAND SELECTION



Length overall	23.90 m
Beam max	5.80 m
Draft	2 m
Fuel capacity	5900 l
Water capacity	1520 l
Holding Tank capacity	576 l
Cabins	4 + 2 crew
Head compartments	3 + 1 crew
Berths	8 + 3 crew
Building material	VTR/GRP

MAJOR REFIT WITHIN 2017

Year: 2002

Engine: 2 x MTU 12V 2000, 1103kW

Engines Hours: 749

Generator: 2 x KOHLER 27kw & 22kw



Technical Data and General Arrangement

SECONDHAND SELECTION



OPTIONS LIST

- Stern Thruster - Hydraulic
- Bow Thruster - Hydraulic - Gasapa
- Plotter - Digital Touch Raymarine
- Autopilot - Raymarine
- GPS - Raymarine
- VHF - Raymarine 260 E
- Radar - Raymarine
- 3 x TVs - Salon, Master, VIP
- DVD Player / CD Player - Sony & Strong
- Cockpit speakers - Kenwood
- Air conditioning - Cruisair
- Water maker - Idromar
- Dishwasher, Oven, Microwave oven - MIELE
- Refrigerator & Deep freezer on galley
- Refrigerators on Fly & Cockpit - Vitrifrigo
- Ice Maker – Frigomar
- Battery charger (3 chargers) - Zivan 80 - CBS 75 AMP - NRG 30 AMP
- Hydraulic Trim tabs
- Life Raft - Sea Safe
- Cockpit, Side deck and flybridge teak
- Hydraulic Gangway - Opacmare
- Hydraulic Swimming ladder
- Crane on fly Opacmare S.W.L. 450Kgs
- Full outside covers
- Bimini top
- AIS - Raymarine Build in
- Safe box in master cabin
- Under water lights



CONTACT INFO

Marios Iordanous
BLUE POINT YACHTING LTD

sales@bpyachting.com

Mob. +357 99 626 993



THIS DOCUMENT IS VALID AS A PRELIMINARY PRESENTATION ONLY

This brochure in no way constitutes a contract of sale for the boatyard's vessels to any person or company. All information contained herein, including but not limited to technical and performance data, illustrations, and drawings, is non-binding and for purposes of illustration only. Developer is not required to deliver a unit in exact accordance with any image or floor plan depicted. Despite efforts to ensure the greatest possible accuracy, Flybridge 80 design is currently on going, therefore images are valid as artist's rendering only. It is not possible to ensure that all information is up to date.