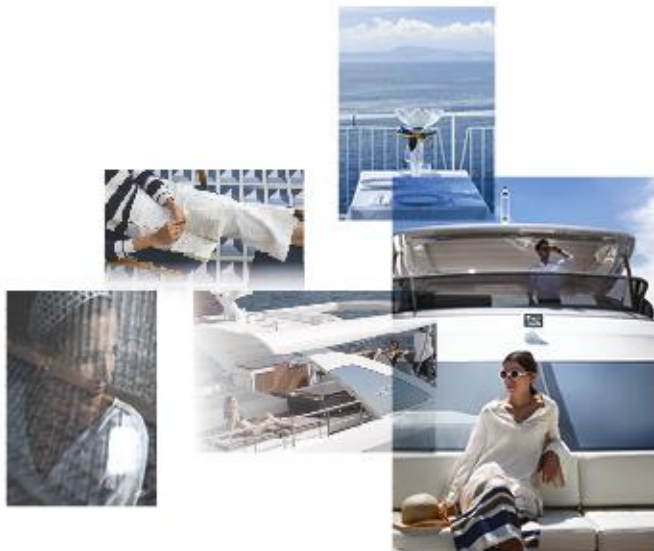


AZIMUT

— 60 —

MY 2022



SECONDHAND SELECTION

Flybridge
Collection



€1,800,000 (VAT Excluded)
Limassol, Cyprus

SECONDHAND SELECTION



EXTERNAL VIEWS

SECONDHAND SELECTION



EXTERNAL VIEWS

SECONDHAND SELECTION



EXTERNAL VIEWS

SECONDHAND SELECTION



EXTERNAL VIEWS

SECONDHAND SELECTION



FLYBRIDGE

SECONDHAND SELECTION



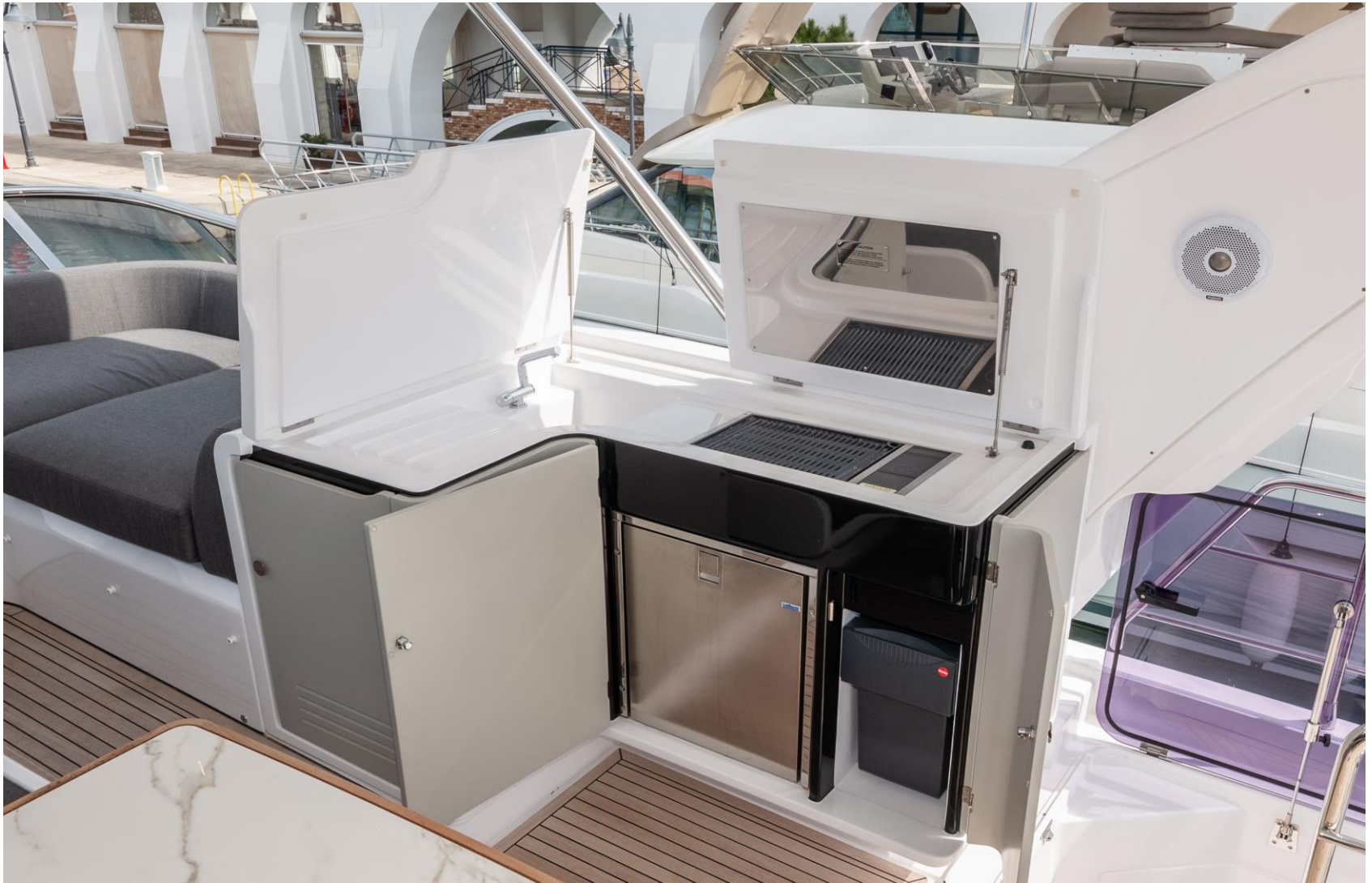
FLYBRIDGE

SECONDHAND SELECTION



FLYBRIDGE

SECONDHAND SELECTION



FLYBRIDGE

SECONDHAND SELECTION



COCKPIT

SECONDHAND SELECTION



COCKPIT

SECONDHAND SELECTION



SALON

SECONDHAND SELECTION



SALON

SECONDHAND SELECTION



SALON

SECONDHAND SELECTION



DINNING AREA



DINNING AREA

SECONDHAND SELECTION



GALLEY

SECONDHAND SELECTION



GALLEY

SECONDHAND SELECTION



HELM STATION

SECONDHAND SELECTION



MASTER CABIN

SECONDHAND SELECTION



MASTER CABIN

SECONDHAND SELECTION



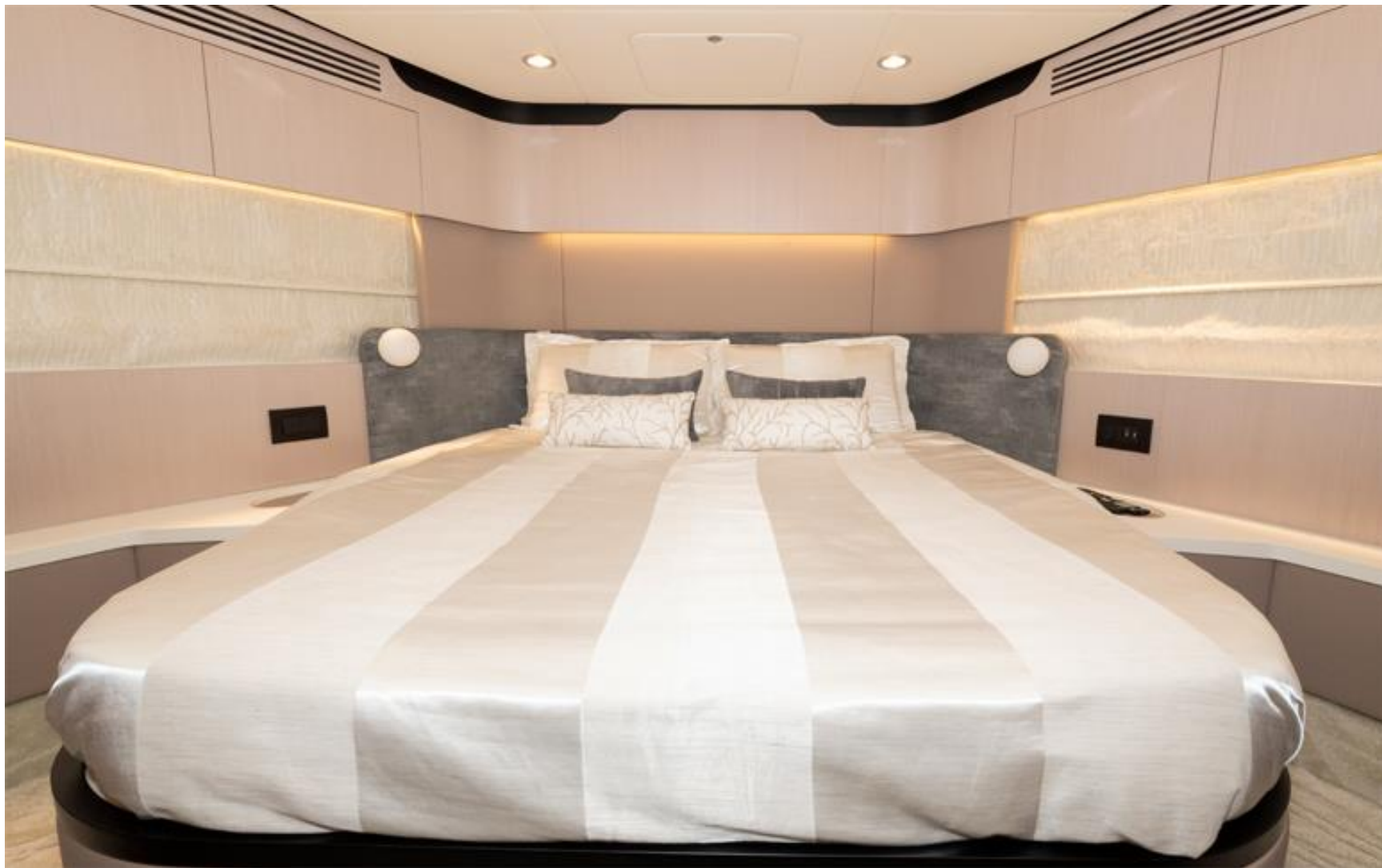
MASTER CABIN

SECONDHAND SELECTION



MASTER CABIN HEAD

SECONDHAND SELECTION



VIP CABIN

SECONDHAND SELECTION



VIP CABIN

SECONDHAND SELECTION



VIP CABIN HEAD

SECONDHAND SELECTION



GUEST CABIN

SECONDHAND SELECTION



GUEST HEAD

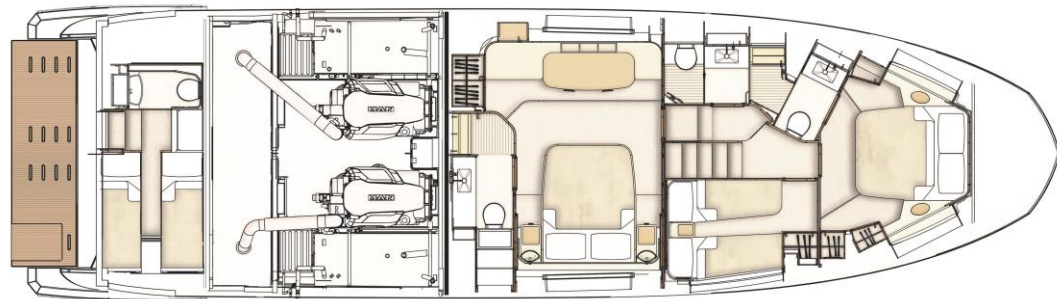
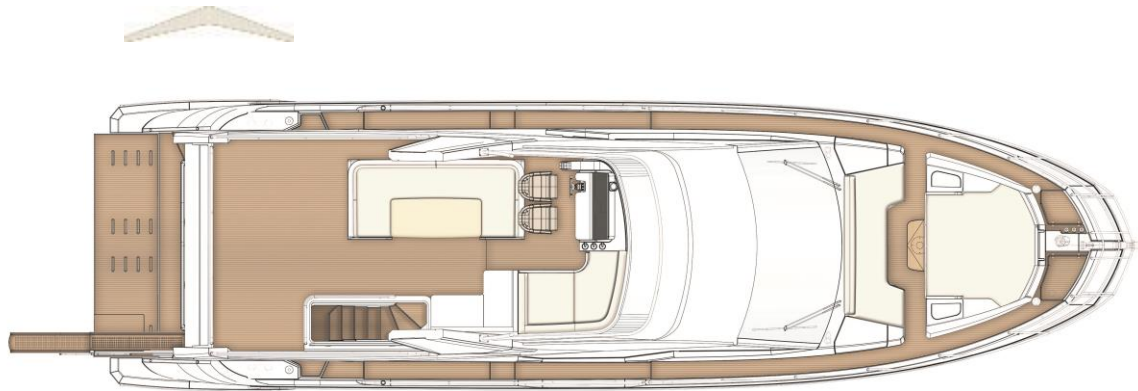
SECONDHAND SELECTION



ENGINE ROOM

Length overall 18.25 m
Beam max 5.05 m
Draft 1.46 m
Fuel capacity 2800 L
Water capacity 750 L
Cabins 3 + 1 crew
Head compartments 3 + 1 crew
Building material Carbon Fiber/GRP

Year: 2022
Engine: 2 x Volvo Penta D13-900HP
Engines Hours: 245
Generator: KOHLER 20 kw
Generator Hours: 540



Technical Data and General Arrangement

SECONDHAND SELECTION



OPTION LIST

- Advance Package, includes:
 - Airconditioning 72,000 BTU
 - Spare conduits
 - Predisposition for watermaker
 - Racor filter for generator
 - Manouvering Joystick
 - Kohler generator 20,5 kw
 - Electric winches
 - Side boarding gates
 - Shore water plug
 - Mesh covers for windows
 - Additional control for electric searchlight
 - Electric searchlight
 - Decor upgrade
 - Miele Appliances
 - Chaincounter in main helm
- Seakeeper Stabilizers NG9 GYRO
- Glendenning cable master
- Idromar Watermaker 180 l/h
- Bow & Stern Thruster 6.5kw
- Cockpit table with synthetic marble insert
- Co-pilot seat on flybridge
- Electric awning in cockpit & aft flybridge
- Flybridge table in teak with synthetic marble insert
- Foredeck lounge with convertible bench/sunbed in Batyline and table synthetic marble insert
- Hard Top with electric awning
- Painted hull and gunwhale in Urals Grey
- Stern teak steps
- Teak on flybridge and side decks
- Telescopic Gangway
- Underwater lights (n.2) Quick
- Co-pilot seat on main helm
- Crew cabin with two beds (with airconditioning)
- Deluxe lighting package
- Dimmer lights on interior (salon, master, vip and guest cabins)
- Domotic lights in salon
- Extendable dinette hi-lo table (automatic)
- Fabric curtains in cabins
- Mosquitos nets for portholes
- Safe in master cabin
- Toilet with bidet faucet feature
- Vanity furniture in master cabin
- Dishwasher in galley
- Barbecue on fly
- Icemaker on fly
- Washer/Dryer combo
- Winecooler in galley
- Raymarine Gold Package
- Raymarine Videocameras (nr.3)
- Raymarine AIS 700
- Audio Video Package
- Spreader lights on aft fly (n.6)
- Coffee table in salon brontze version
- Wooden floor in dinette and galley
- Tender Williams 285
- 2 x empty domes painted in grey



SECONDHAND SELECTION



CONTACT INFO

Marios Iordanous
BLUE POINT YACHTING LTD

sales@bpyachting.com

Mob. +357 99 626 993



THIS DOCUMENT IS VALID AS A PRELIMINARY PRESENTATION ONLY

This brochure in no way constitutes a contract of sale for the boatyard's vessels to any person or company. All information contained herein, including but not limited to technical and performance data, illustrations, and drawings, is non-binding and for purposes of illustration only. Developer is not required to deliver a unit in exact accordance with any image or floor plan depicted. Despite efforts to ensure the greatest possible accuracy, Flybridge 60 design is currently on going, therefore images are valid as artist's rendering only. It is not possible to ensure that all information is up to date.